



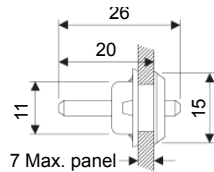
- ▶ Easy assembly, simple to use
- ▶ Brass fitting options also available upon request
- ▶ Vast collection of fittings to suit all tube sizes
- ▶ Adjustable bleed connectors available upon request

| Specifications | |
|-----------------------------|---------------------------------|
| Standards/ approvals | n/a |
| Degree of protection | n/a |
| Connection method | see table |
| Electrical rating | n/a |
| Contact configuration | n/a |
| Operating temperature range | -10°C to +40°C |
| Body material | Brass, PVC, nylon, Polyruethane |
| Weigh | see table |

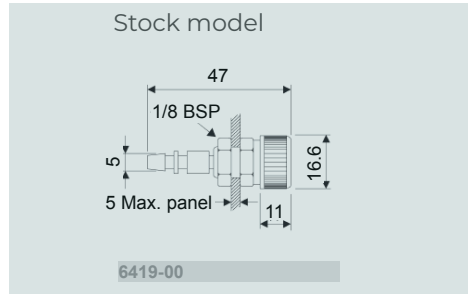
| Tube type | Part No. | Material | Bore Ø mm | Outside Ø mm | For use with spout Ø | Application |
|-----------------------------------|----------|-----------|-----------|--------------|--|--|
| Single tube | 2311-01 | Clear PVC | 3.0 | 6.0 | 4.0 | For connecting all air, vacuum and low pressure switches and airswitches |
| | 2311-08 | Black PVC | 3.0 | 6.0 | 4.0 | |
| | 2311-03 | Black | 1.5 | 3.2 | 2.1 - 2.5 mm to fit 4.0 mm spout use 3420-28 | For microbore air systems |
| Twin tube | 2311-09 | Black PU | 3/0 | 2x 6.0 | 4.0 | For connecting all air, vacuum and low pressure switches and airswitches |
| Flat twin tube | 2311-15 | Grey | 1.5 | n/a | 2.1 - 2.5 mm to fit 4.0mm spout use 3420-28 | For use with all foot bellows and special versions of hand controls. Tubes can be split into single cores. |
| 2.4m coiled twin tube (stretched) | 2311-14 | Grey | 1.5 | n/a | 2.1 - 2.5 mm to fit 4.0 mm spout use 3420-28 | |



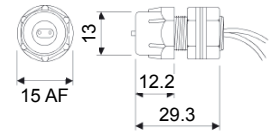
Bulkhead connectors (reference dimensions)



6418-00



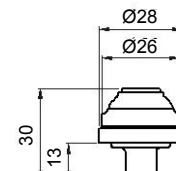
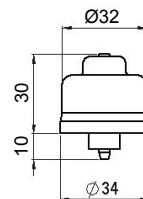
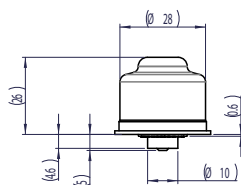
6419-00



6419-0010

| Model No. | 6418-00 | 6419-00 | 6419-0010 |
|-----------------|--|--|--|
| Panel Thickness | 1 to 7 mm | 1 to 5 mm | 0.5 to 4 mm |
| Cut-out Ø | 11 mm | 10 mm | 13 mm |
| Spout Ø | IN | 4 mm | 2 x 2.1 mm brass spout for twin tube with locking collar |
| | OUT | 4 mm | 2 x 1.5 mm bore polyurethane tube 150mm long |
| Material | Black nylon | Black nylon | Black nylon & PU |
| Fixing | Spire fix | Flange nut | Flange |
| Use | Low cost bulkhead connector 3 mm I/D tubes | Bulkhead connector with connecting tube lock for 3mm I/D tubes | Bulkhead connector for 1.5mm I/D twin tube |

Internal bellows (reference dimensions)



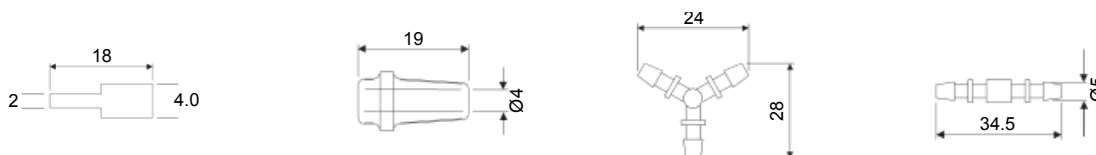
| Model No. | 6444-03 | 6444-04 | 6435-01 |
|------------|---------|---------|---------|
| Material | PVC | PVC | Silicon |
| Spout size | 4 mm | 4 mm | 2 mm |



Connectors (reference dimensions)



| Model No. | 6420-00 | 6421-00 | 3612-04 | 3420-20 |
|-------------------------------------|--------------------------|--------------------------|---------|---------|
| Material | Tranlucent nylon | Tranlucent nylon | Brass | Brass |
| Ø mm | 5 mm | 5 mm | 2.1 mm | 2.0 mm |
| For connecting tube with internal Ø | 3 mm (2311-01 & 2311-08) | 3 mm (2311-01 & 2311-08) | 1.5 mm | 1.5 mm |



| Model No. | 3420-28 | 3321-07 | 6422-00 | 6422-0001 |
|-------------------------------------|---|--|---|--|
| Material | Brass | Soft black PVC | Tranlucent Nylon | Tranlucent Nylon |
| Ø mm | 4 mm to 2 mm | 4 mm to 4 mm | 5 mm | 5 mm |
| For connecting tube with internal Ø | 3 mm to 1.5 mm | | 3 mm (2311-01 & 2311-08) | 3 mm (2311-01 & 2311-08) |
| Use | For reducing or increasing small to large bore tubing | in line reducer to connect from 4mm O/D PVC tube to 4 mm spout | Combining variations of inlet and outlet e.g. 1 bellows 2 airswitches | Pours bleed filter flow 0.1/0.4 Lt/Min @ 8.5 PSI air flow damper |