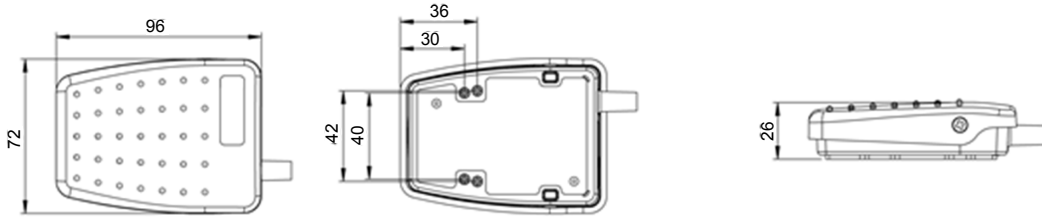


- ▶ **Low profile, rear hinged switch designed for improved user comfort**
- ▶ **All plastic construction with raised tread pattern and anti-slip pad**
- ▶ **Versatile and innovative design make it an ideal product for OEM use**
- ▶ **Switches designed to meet industrial, office and commercial standards**
- ▶ **Variable output option**
- ▶ **Option for customers to fit own cable**

Specifications	
Standards/approvals	n/a
Degree of protection	EN 60529 IPX2
Connection method	Stripped cable cores or connector of your choice
Electrical rating	Max. 3A 250V AC/DC
Contact configuration	SPST N/O, SPST N/C, SPCO, DPST N/O, DPST N/C, DPCO
Operating temperature range	-20° C to + 80° C
Body material	Thermoplastic
Weight	0.14Kg (including cable)
Additional information	Customized versions available (logos, cordsets, colours, guards)



Dimensions



M3 Brass fixing inserts
Bottom holes as standard





Ordering information

(Please use the characters in the chart below to create your product code)

Sample code 6227 - A A A A - B B B Z - 000

Cover & base colours

A	Black cover & Black base
B	Grey cover & Black base
C	Yellow cover & Black base
D	Green cover & Black base
E	Red cover & Black base
L	Blue cover & Black base
N	Orange cover & Black base

Base Configuration

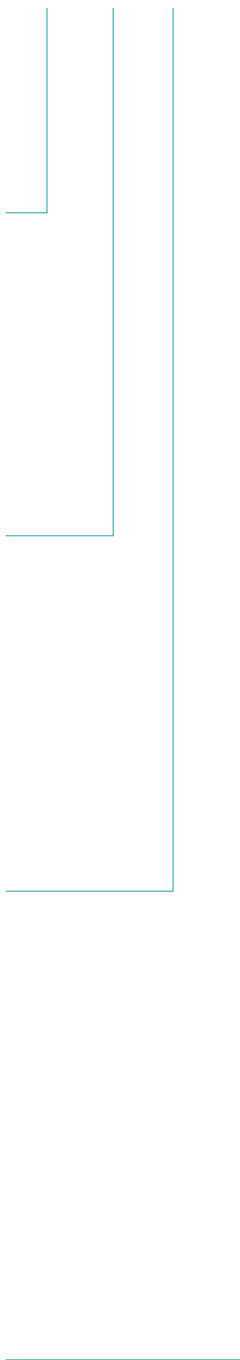
A	Base fitted with M3 brass inserts
B	Base fitted with Neoprene pad
C	Base fitted with M3 brass inserts & Neoprene pad
D	Base fitted with Anti-slip Feet

Switching action

A	Single pole normally open(SC)
B	Single pole change over (CC)
C	Double pole normally open (DO)
D	Double pole normally open, Two stage (DA)
E	Single or double switch supplied without cable
F	USB Pre-programmed for customer keystroke (supplied with 2.5m cable & plug)
G	Variable output/Hall effect

Electrical Rating

A	Microswitch (Max. rating 0.1A, 24 V AC/DC)
B	Microswitch (Max. rating 3A, 250 V AC/DC)
C	Sub-Min Microswitch For USB Option Only (Max Rating 20mA 5V DC)
D	Variable output only (0-5V output)





Ordering information

(Please use the characters in the chart below to create your product code)

Sample code 6227 - A A A A - B B B Z - 000

2-core cable at 2m length

- B Cable 2-core black

- Z No cable chosen

3-core cable at 2m length

- B Cable 3-core black

- Z No cable chosen

4-core cable at 2m length

- B Cable 4-core black

- Z No cable chosen

Non cable variants

- A Microswitch change over - fitted with flying leads 450mm long (Max. rating 3A, 250V AC/DC)

- B Double microswitch changeover (Solder tag 3.2 mm x 0.5mm) (Max. rating 3A, 24 V AC/DC)

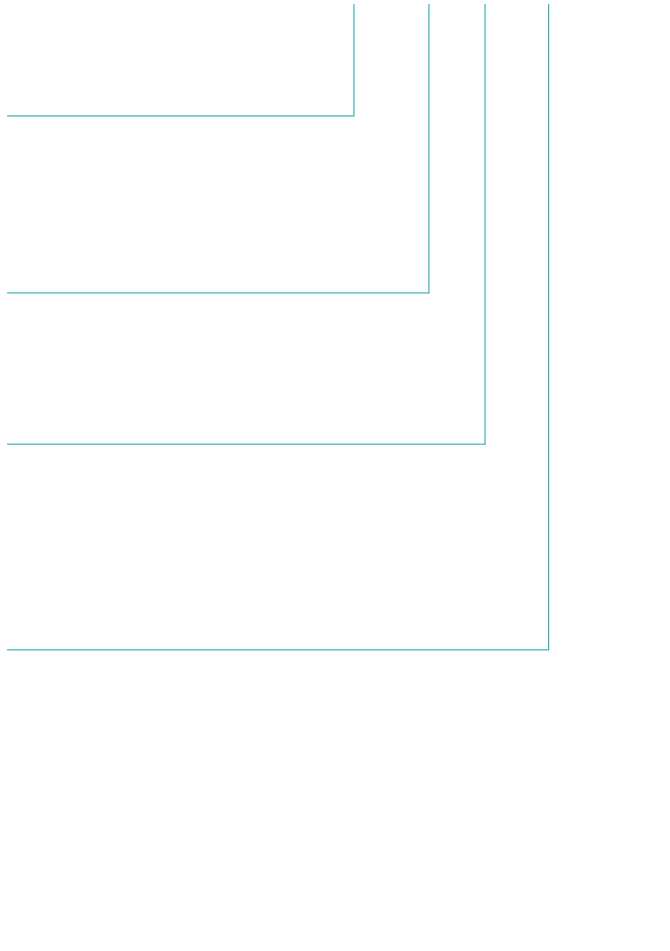
- Z No option chosen

Special attributes

000 indicates no special attribute option chosen (product as standard matrix)

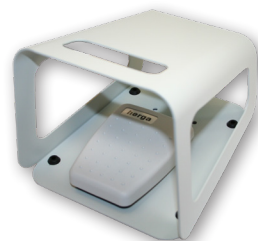
001 through 999 indicates special attributes

Note : Examples: Customer specified cable/ cordset with or without plug. Cable length variation if different from 2m. Customer specified identification and label combination Guard or special base



Accessories

Part-Number	Description
6202-0001	Single black, RAL 9005 guard
6202-0002	Single grey, RAL 7035 guard
6202-0003	Twin grey, RAL 7035 guard



If you require a customized solution for your program contact our sales team.