

Momentary model



Latching model



- ▶ **Lightweight operation over the entire top surface**
- ▶ **Designed to withstand heavy loads**
- ▶ **Customer colours and logos available upon request**

- ▶ **These switches may be used in multipedal configurations**
- ▶ **Snap contact and latching options**

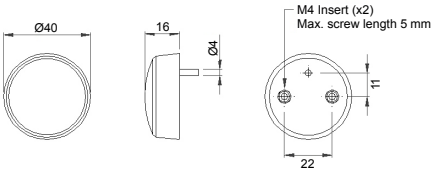
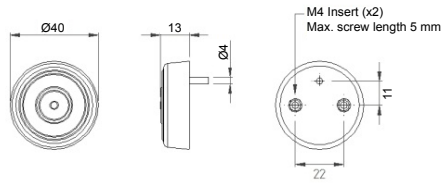
Specifications	
Standards / Approvals	UL File No: E353500 · EN 60601-1:2007/A2:2021 · IEC 60601-1:2005+AMD1:2012+AMD2:2020 · CAN/CSA C22.2. No 60601-1:08 · CAN/CSA C22.2. No 60601-1-14/A1+A2:2022 · ANSI/AAMI ES60601-1:2005/A1:2012 +A2:2021 · IEC 60601-2-2: 2023 · IEC 60601-2-52: 2009/AMD1:2015 · CAN/CSA-C22.2 NO. 60601-2-52:11/AMD1:2017 · IEC 60601-2-43: 2022 · IEC 60601-2-46: 2023
Degree of protection	EN 60529 IP67 (IP68 upon request)
Connection method	Stripped cable cores or connector of your choice
Electrical rating	See table
Contact configuration	SPST N/O
Operating and storage temperature	+ 10°C to + 50°C
Body material	Thermoplastic
Weight	0.06 kg

6241 BELLOW FOOTSWITCH / PALM SWITCH

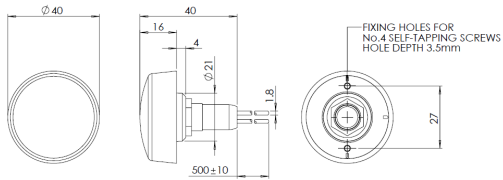


Dimensions

Momentary model



Latching model



6241 BELLOW FOOTSWITCH / PALM SWITCH



Ordering information

(Please use the characters in the chart below to create your product code)

Sample Code 6241 - A A A A - B A A Z - X

Bellows type	A	Flat	
	B	Domed	
Colour	A	Black	
	B	Grey	
	C	White	
	E	Green	
	G	Yellow	
	H	Blue	
Mounting option	A	Back entry base, M4 inserts fitted	
	B	Back entry base, no inserts fitted	
	C	Back entry base, No. 4 self tapping screw	
Switch action & rating	A	Single Pole Normally Open Contact 50mA 12VDC (Operating force < 10N)	
	B	Single Pole Normally Open Contact 50mA 24VDC (Operating force < 10N)	
	C	Single Pole Normally Open Contact 50mA 24VDC (Operating force > 10N, Nom = 15N)	
	D	Single Pole Normally Open Snap Contact 50mA 24VDC (Operating force < 10N, Nom = 6N)	
	E	Single Pole Normally Open Snap Contact 50mA 24VDC (Operating force > 10N, Nom = 27N) Nom = 27N)	
	F	Latching Action Single Pole OFF-ON Contacts 1.75A 24Vdc (Operating force < 10N)	

(Option C, D & E only available with domed bellows)
(Option F only available with self tapping screws)
(Option F only available with flying lead terminals)

If you require a customized solution for your program contact our sales team.

6241 BELLOW FOOTSWITCH / PALM SWITCH



Ordering information

(Please use the characters in the chart below to create your product code)

Sample Code 6241 - A A A A - B A A Z - X

Approvals	
B IEC 60601 - 1 & UL 60601	
Cord-Sets (C - only available on Latching Switch)	
A 2 Core black 24 awg. Rating 1.75A max 250Vac	
B 2 Core grey 24 awg. Rating 1.75A max 250Vac	
C Flying Lead Terminals (20AWG)	
Z No Option Chosen	
Cable length	
A 2m	
B 3m	
C 5m	
D 10m	
Z No option chosen.	
Special attributes	
001 through to 999, or Z; Customer specified/ supplied ordset for factory fitting with or without plug. The suitability may not be covered by UL. Customer specified identification and label combination. Guard and mounting plates. Z indicates no option chosen	

If you require a customized solution for your program contact our sales team.