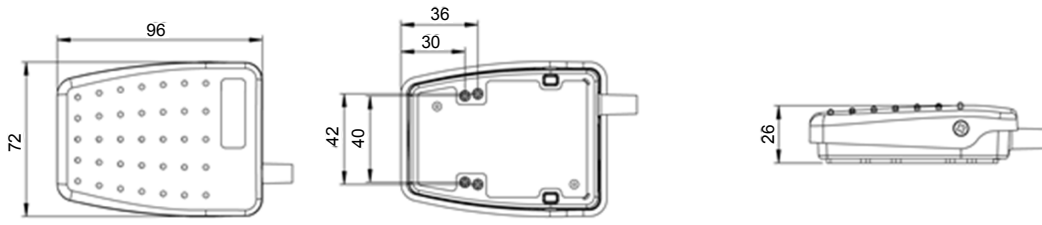


- ▶ **Low profile, rear hinged switch designed for improved user comfort**
- ▶ **All plastic construction with raised tread pattern and anti-slip pad**
- ▶ **Versatile and innovative design make it an ideal product for OEM use**
- ▶ **Switches designed to meet industrial, office and commercial standards**
- ▶ **Variable output option**
- ▶ **Option for customers to fit own cable**
- ▶ **For IPX7/IPX8 single & double pole switching**

Specifications	
Standards/approvals	n/a
Degree of protection	EN 60529 IPX7 (IPX8 upon request)
Connection method	Stripped cable cores or connector of your choice
Electrical rating	Max. 3A 250V AC/DC
Contact configuration	SPST N/O, SPST N/C, SPCO, DPST N/O, DPST N/C, DPCO
Operating temperature range	-20° C to + 80° C
Body material	Thermoplastic
Weight	0.14Kg (including cable)
Additional information	Customized versions available (logos, cordsets, colours, guards)



## Dimensions



M3 Brass fixing inserts  
Bottom holes as standard





## Ordering information

(Please use the characters in the chart below to create your product code)

**Sample code**      6228   -   A   A   A   A   -   B   B   B   Z   -   000

### Cover & base colours

A	Black cover & Black base
B	Grey cover & Black base
C	Yellow cover & Black base
D	Green cover & Black base
E	Red cover & Black base
L	Blue cover & Black base
N	Orange cover & Black base

### Base Configuration

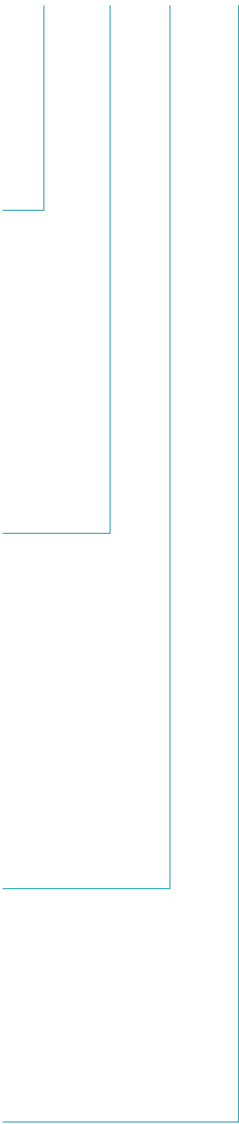
A	Base fitted with M3 brass inserts
B	Base fitted with Neoprene pad
C	Base fitted with M3 brass inserts & Neoprene pad
D	Base fitted with Anti-slip Feet

### Switching action

A	Single pole normally open(SC)
B	Single pole change over (CC)
C	Double pole normally open (DO)
D	Double pole normally open, Two stage (DA)
G	Variable output/Hall effect

### Electrical Rating

A	Microswitch (Max. rating 0.1A, 24 V AC/
B	Microswitch (Max. rating 3A, 250 V AC/
D	Variable output only (0-5V output)



If you require a customized solution for your program contact our sales team.



## Ordering information

(Please use the characters in the chart below to create your product code)

**Sample code**      6228   -   A   A   A   A   -   B   B   B   Z   -   000

### 2-core cable at 2m length

B    Cable 2-core black

Z    No cable chosen

### 3-core cable at 2m length

B    Cable 3-core black

Z    No cable chosen

### 4-core cable at 2m length

B    Cable 4-core black

Z    No cable chosen

### Non cable variants - microswitch flying leads only

A    Microswitch change over - fitted with flying leads 450mm long (Max. rating 3A, 250V AC/DC)

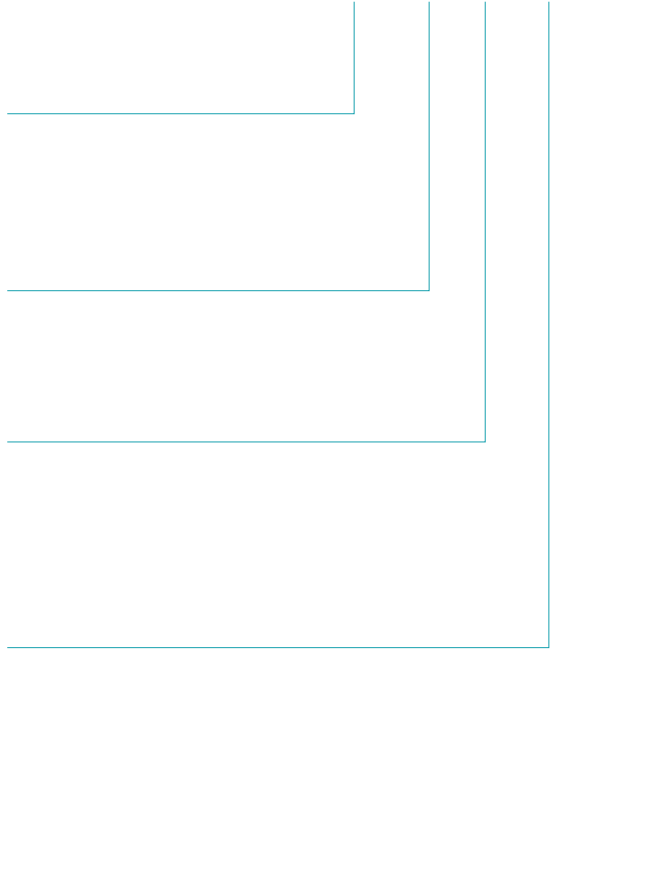
Z    No option chosen

### Special attributes

000 indicates no special attribute option chosen (product as standard matrix)

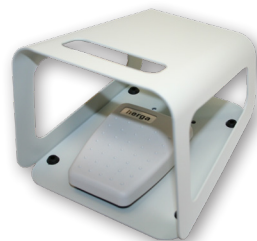
001 through 999 indicates special attributes

Note : Examples: Customer specified cable/ cordset with or without plug. Cable length variation if different from 2m. Customer specified identification and label combination Guard or special base



## Accessories

Part-Number	Description
6202-0001	Single black, RAL 9005 guard
6202-0002	Single grey, RAL 7035 guard
6202-0003	Twin grey, RAL 7035 guard



If you require a customized solution for your program contact our sales team.