

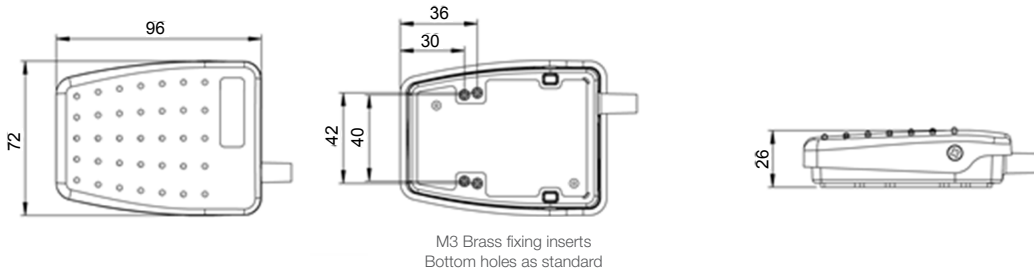


- ▶ Low profile, rear hinged switch designed for improved user comfort
- ▶ All plastic construction with raised tread pattern and anti-slip pad
- ▶ Versatile and innovative design make it an ideal product for OEM use
- ▶ Switches designed to meet medical, industrial/office/commercial standards
- ▶ Option for customers to fit own cable

Specifications	
Standards/approvals	UL File No: E353500 · EN 60601-1:2007/A2:2021 · IEC 60601-1:2005+AMD1:2012+AMD2:2020 · CAN/CSA C22.2. No 60601-1:08 · CAN/CSA C22.2. No 60601-1-14/A1+A2:2022 · ANSI/AAMI ES60601-1:2005/A1:2012 +A2:2021
Degree of protection	EN 60529 IPX7 (IPX8 upon request)
Connection method	Stripped cable cores or connector of your choice
Electrical rating	Max. 3A 24V AC/DC
Contact configuration	SPST N/O, SPST N/C, SPCO, DPST N/O, DPST N/C, DPCO
Operating temperature range	-20° C to + 60° C
Body material	Thermoplastic
Weight	0.14Kg (including cable)
Additional information	Customized versions available (logos, cordsets, colours, guards)



Dimensions





Ordering information

(Please use the characters in the chart below to create your product code)

Sample Code 6226 - A A A A - A A A A - 000

Colour

- A Black cover & Black base

- B Grey cover & Black base

- C Yellow cover & Black base

- D Green cover & Black base

- L Blue cover & Black base

- N Orange cover & Black base

Base configuration

- A Base fitted with M3 brass inserts

- B Base fitted with Neoprene pad

- C Base fitted with M3 brass inserts & Neoprene pad

- D Base fitted with Anti-slip Feet

Switching action

- A Single pole normally open (SC)

- B Single pole change over (CC)

- C Double pole normally open (DO)

- D Double pole normally open, Two stage (DA)

Electrical rating

- A Micro switch (Max. 0,1A, 24 V AC/DC)

- B Micro switch (Max. 1,75 A, 24 V AC/DC)

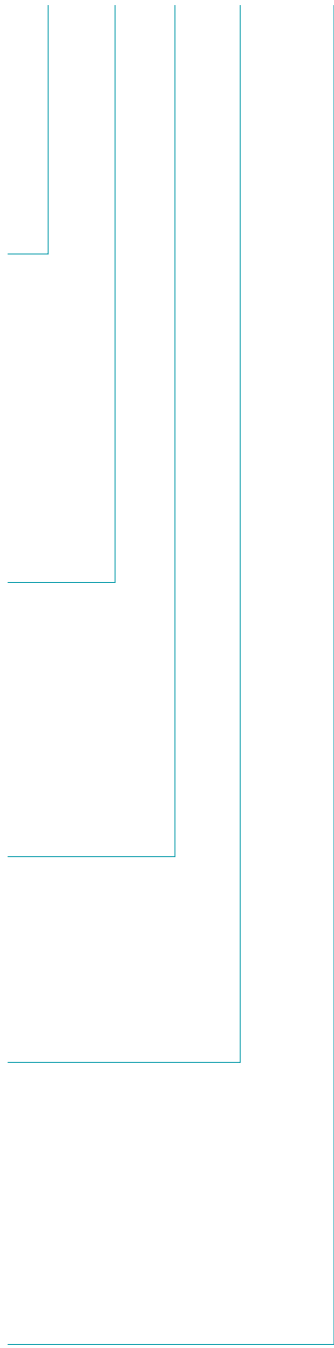
IEC 60601-1 und UL 60601-1, 2-core cable at 2m length

- A Cable 2-core Grey

- B Cable 2-core Black

- C Cable 2-core Grey screened

- Z No cable chosen



If you require a customized solution for your program contact our sales team.



Ordering information

(Please use the characters in the chart below to create your product code)

Sample Code 6226 - A A A A - A A A A - 000

IEC 60601-1 und UL 60601-1, 3-core cable at 2m length

A	Cable 3-core Grey
B	Cable 3-core Black
C	Cable 3-core Grey screened
Z	No cable chosen

IEC 60601-1 und UL 60601-1, 4-core cable at 2m length

A	Cable 4-core Grey
B	Cable 4-core Black
C	Cable 4-core Grey screened
Z	No cable chosen

Non cable variants - microswitch flying leads only (a or Z)

A	Microswitch change over - fitted with flying leads min. 300 mm long (max. 3A, 24V AC/DC)
Z	No cable chosen

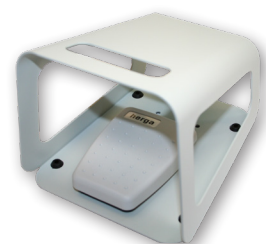
Special attributes

000	No option chosen
001 - 999	indicates special attributes

Suitability of special attributes may not be covered by UL
 Examples: Customer specified cable/cordset with or without plug (Max. rating 3A, 24V AC/DC)
 Cable length variation if different from 2m
 Customer specified identification and label combination
 Guard or special base

Accessories

Part-Number	Description
6202-0001	Single - black, RAL 9005 guard
6202-0002	Single - grey, RAL 7035 guard
6202-0003	Twin - grey, RAL 7035 guard



If you require a customized solution for your program contact our sales team.