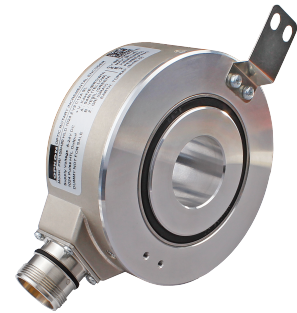


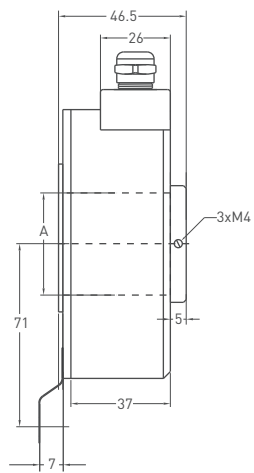
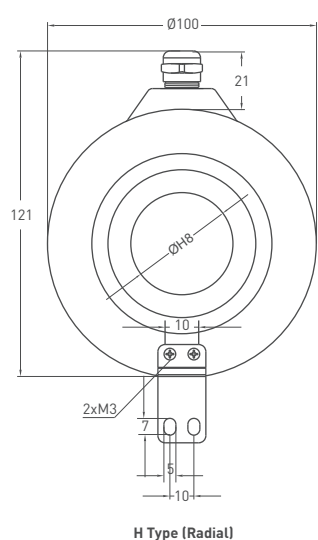
INCREMENTAL

- 100 mm case diameter
- 1024 ppr.
- Hollow shaft rod diameter 25 - 28 - 30 - 35 -38 - 40 - 42 mm
- 3500 rpm max.
- For elevator application



Technical Specifications	
Resolution	1024 ppr.
Output channels	A, B, Z or A,Ā, B,Ḃ, Z,Ż
Output type	Push-Pull, TTL, Linedriver, HLD
Power supply	5 VDC , 8-24 VDC or 5-24 VDC
Power consumption (without load)	< 40 mA (24 VDC)
Cable	2,5 meter (standard) 5 wire + shield (Push-Pull)
	2,5 meter (standard) 8 wire + shield (Linedriver)
Max. permissible shaft loading	radial 180 N
	axial 80 N
Displacement speed	3500 rpm
Rod diameter	Ø25 - 28 - 30 - 35 -38 - 40 - 42 mm
Rod material	Stainless steel
Case dimensions	Ø100 mm
Case material	Aluminium and painted steel
Protection level	IP 50
Operating temperature	-20°C ... +80°C
Storage temperature	-30°C ... +90°C

Mechanical Specifications



TTL - HLD - Linedriver Cable Output

- Ch A : Yellow
- Ch A inv.: Blue
- Ch B : Green
- Ch B inv.: Red
- Ch Z : Gray
- Ch Z inv.: Pink
- +V : Brown
- 0V : White
- GND : Shield

Push - Pull Cable Output

- Ch A : Yellow
- Ch B : Green
- +V : Brown
- 0V : White
- GND : Shield

Hollow diameter(A)
25
28
30
35
38
40
42

Ordering Procedure

Model	Case diameter	Case type	Rod diameter	Output type	Resolution	Output Signal	Supply voltage	Connector / Cable	Cable output
PRI	100	H	25	LTP	1024	Z	V3	2M5	R
PRI	100: 100 mm	H : Hollow shaft	25: 25mm 40: 40mm 28: 28mm 42: 42mm 30: 30mm 35: 35mm 38: 38mm	LTP : Push-Pull LD : Linedriver HLD : High Linedriver TT : TTL	1024 ppr.	Z : A, B, Z B : A, B ZZ : AA, BB, ZZ	V1 : 5V DC V2 : 8 - 24V DC V3 : 5 - 24V DC	2M5 : 2,5 meter cable 5M : 5 meter cable 8M : 8 meter cable 10M : 10 meter cable C12 : 12 pin connector	R : Radial