

MRA 50A

Magnetic Absolute Encoder SSI Output



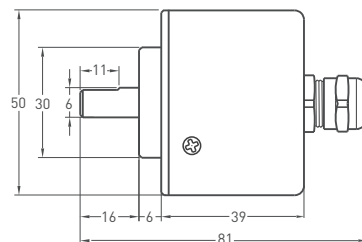
- 50 mm case diameter
- Magnetic absolute rotary encoder
- SSI Absolute (10 bit / 360°)
- 2.5m cable (standard) with connector (Optional) electrical connection



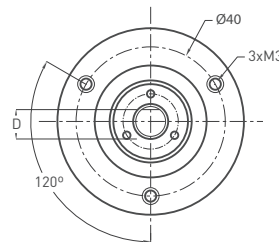
Technical Specifications

Type of measurement	Magnetic absolute
Resolution	10 bit / 360°
Output type	SSI (Binary)
Output signal type	5V TTL
Power supply	8-24 VDC (standard) or 5 VDC (optional)
Power consumption (without load)	< 40 mA (24 VDC)
Electrical connections	2,5 meter cable (standard), connector (optional)
Max. permissible shaft loading radial	100 N
axial	60 N
Max. displacement speed	1000 rpm
Rod diameter	Ø8 mm
Rod material	Stainless steel
Case diameter	Ø50 mm
Case material	Aluminium and painted steel
Operating temperature	-20°C ... +80°C
Storage temperature	-30°C ... +90°C

Mechanical Specifications

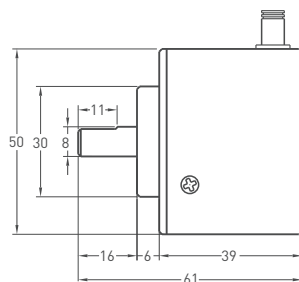


Mil Type / Axial

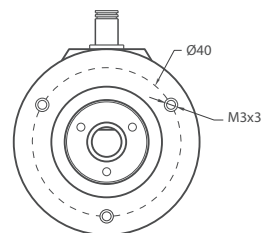


Cable Output

+V	: Brown
0V	: White
CLK	: Green
DO	: Gray



Mil Type / Radial



Ordering Procedure

Model	Case diameter	Output signal type	Output type	Power supply	Connector / Cable	Cable output
MRI	50	TTL	SSI	V1	2M5	R
MRI	50A :Clamping flange 50AW :Watertight	TT : TTL Absolute	SSI	V1 : 5 VDC V1 : 8-24 VDC	2M5 : 2,5 meter cable 5M : 5 meter cable 8M : 8 meter cable 10M : 10 meter cable	R: Radial A: Axial

The above technical datas are for information only. OPKON has the right for changing without any notifications.