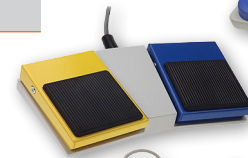


# Multi-Pedal Footswitches

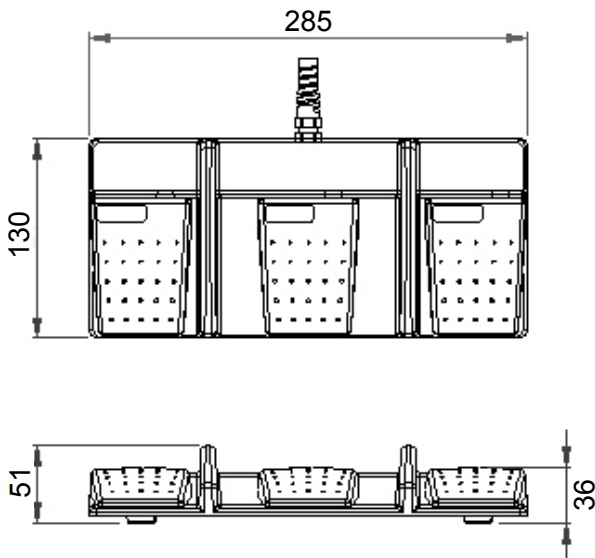


Technology Ltd

- Using all of the options available with our multi-pedal footswitching, we can meet a wide variety of OEM applications and comply to the differing international standards
- Sealed to IPX2 & IPX7 (IPX8 upon request )
- Maximum electrical ratings are determined by application
- 2, 3 & 4 pedal versions available



## Reference dimensions - 3-pedal model



## General specifications

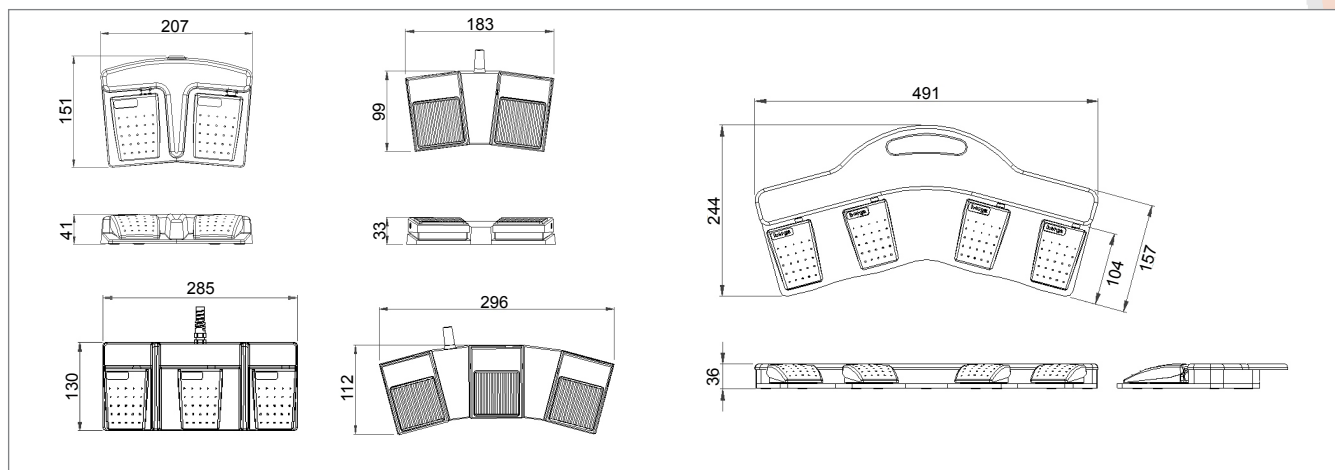
<b>Standards/ approvals</b>	Not limited to but including: Footswitch: low voltage directive 2014/35/EU, EN 60950; Microswitch: EN 61058-2-1, EN 61058 (Dependent upon application chosen)
<b>Degree of protection</b>	EN 60529 IPX2, IPX7 or IPX8
<b>Connection method</b>	stripped cable cores or connector of your choice
<b>Electrical rating</b>	Determined by application

<b>Contact configuration</b>	SPST N/O, SPST N/C, SPCO momentary or latching
<b>Operating temperature range</b>	-5°C to +40°C
<b>Body material</b>	Thermoplastic, powder coated mild steel, stainless steel, aluminium
<b>Weight</b>	Varies, dependent on the base and footswitch type
<b>Additional information</b>	Custom bases available for OEM applications



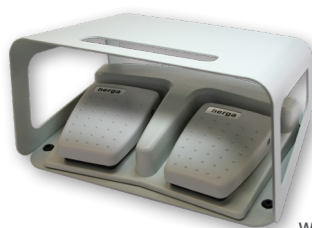
**ALCYON**  
ÉLECTRONIQUE  
[commercial@alcyonelectronique.fr](mailto:commercial@alcyonelectronique.fr)

## Reference dimensions - other multi-pedal model options



## Accessories

Part Number	Description
6202-0001	Single Black RAL 9005 guard
6202-0002	Single Grey RAL 7035 guard
6202-0003	Twin Grey RAL 7035 guard



With 6202 Guard