

[illegible]

--	--

<div style="font-size: 48px; margin-bottom: 20px;">R11S-2-5</div> <div style="font-size: 48px;">T11-2-5</div>	
THIRD DECISION	
RATED CURRENT (SUPPLEMENTARY PROTECTION)	
USE THREE NUMBERS TO PRINT REQUIRED CURRENT VALUE BETWEEN .100 AMPS MINIMUM AND 300 AMPS MAXIMUM.	
NOTES:	
1. >20A, 2 POLE W/AUX.SW. AVAILABLE IN ROCKER HANDLE STYLE ONLY.	
2. 20 AMP MAX. ON 400 HZ UNITS.	
SWITCH	
-SW	MAINTAINED

•

•

•

C

DRAWN

CHECKED


<div style="position: absolute; top: 10px; left: 10px; width: 80%;"><p>00A-B01CV-C</p><p>00A-01-11AL-</p></div>																																
<div style="position: absolute; bottom: 10px; left: 10px;"><p>OR)</p><p>RENT</p><p>D AMPS</p></div>	<div style="border: 1px solid black; padding: 5px; margin-bottom: 5px;">FOURTH DECISION</div> <div style="border: 1px solid black; padding: 5px;">(SEE SHEET 5)</div>	<table style="width: 100%; border-collapse: collapse;"><tr><td colspan="2">HARDWARE</td></tr><tr><td colspan="2">GROUP</td></tr><tr><td>-00</td><td>NO OUTER HARDWARE</td></tr><tr><td>-10</td><td>BLACK KNURLED NUT</td></tr><tr><td>-11</td><td>BRIGHT NICKEL FINISH</td></tr><tr><td>-20</td><td>BLACK PANEL DRILL</td></tr><tr><td>-21</td><td>BRIGHT NICKEL FINISH</td></tr><tr><td>-31</td><td>BRIGHT NICKEL FINISH</td></tr><tr><td colspan="2">GROUP II (INDICATOR)</td></tr><tr><td>A</td><td>VERTICAL MOUNTING</td></tr><tr><td>B</td><td>HORIZONTAL MOUNTING</td></tr><tr><td colspan="2">GROUP III</td></tr><tr><td>L</td><td>LOCKING RING</td></tr><tr><td colspan="2">GROUP IV</td></tr><tr><td>S</td><td>6-32 SCREW TERMINALS NOTES: 1. SCREW ADAPTERS AVAILABLE ON REQUEST 2. SCREW ADAPTERS AVAILABLE ON REQUEST 3. SCREW ADAPTERS UL APPROVED</td></tr></table>	HARDWARE		GROUP		-00	NO OUTER HARDWARE	-10	BLACK KNURLED NUT	-11	BRIGHT NICKEL FINISH	-20	BLACK PANEL DRILL	-21	BRIGHT NICKEL FINISH	-31	BRIGHT NICKEL FINISH	GROUP II (INDICATOR)		A	VERTICAL MOUNTING	B	HORIZONTAL MOUNTING	GROUP III		L	LOCKING RING	GROUP IV		S	6-32 SCREW TERMINALS NOTES: 1. SCREW ADAPTERS AVAILABLE ON REQUEST 2. SCREW ADAPTERS AVAILABLE ON REQUEST 3. SCREW ADAPTERS UL APPROVED
HARDWARE																																
GROUP																																
-00	NO OUTER HARDWARE																															
-10	BLACK KNURLED NUT																															
-11	BRIGHT NICKEL FINISH																															
-20	BLACK PANEL DRILL																															
-21	BRIGHT NICKEL FINISH																															
-31	BRIGHT NICKEL FINISH																															
GROUP II (INDICATOR)																																
A	VERTICAL MOUNTING																															
B	HORIZONTAL MOUNTING																															
GROUP III																																
L	LOCKING RING																															
GROUP IV																																
S	6-32 SCREW TERMINALS NOTES: 1. SCREW ADAPTERS AVAILABLE ON REQUEST 2. SCREW ADAPTERS AVAILABLE ON REQUEST 3. SCREW ADAPTERS UL APPROVED																															
<div style="display: flex; align-items: center; justify-content: center;"><div style="text-align: center;"> Sensata Technologies</div><div style="margin-left: 20px;"><h1 style="margin: 0;">SNAP</h1></div></div>																																
<p>POWER CONTROLS</p> <p>BRIDGE, MD USA</p>		<p>MATERIAL</p>																														
<p>C.H. APPROVED B.H.</p> <p>P.A.Y. DATE 9/11/95</p>		<p>FINISH</p>																														
<p>213</p>		<p>SCALE</p>																														

THIRD ANGLE PROJECTION

INTERPRET DRAWING PER ANSI Y14.5M-1982

INCH [MM]	MATERIAL
TOLERANCE UNLESS NOTED	FINISH
INCH ±.015	
MM ±.38	
ANGLES ± 5°	SCALE

V = VDE & CCC APPROVED
AREAS ENCLOSED WITH BOLD LINES DENOTE VDE APPROVAL OPTIONS. THIS APPROVAL REQUIRES THE ADDITION OF A V AT THE END OF THE PART NUMBER. THE V WILL BE ADDED TO ANY PART NUMBER FORMED ENTIRELY FROM BOLD OUTLINED DECISIONS. IF NON-BOLD OUTLINED AREAS ARE SELECTED, THE UNIT WILL NOT BE VDE APPROVED, BUT OTHER APPROVALS STILL APPLY.

	
POWER CAMBRIDGE	
DRAWN	C.H.
CHECKED	P.A.Y.

 <p>Sensata Technologies</p> <p>CONTROLS MD USA</p> <p>ROVED B.H. E 9/11/95</p>	 <p>T</p>
	<p>IN PER</p>
	<p>UN</p>
	<p>I</p>
	<p>I</p>

 THIRD ANGLE PROJECTION		SNAPAK SPECIFICATION	
PREPARED BY: [Blank] CHECKED BY: [Blank] DESIGNED BY: [Blank] DRAWN BY: [Blank] DATE: 11/14/2014		MATERIAL	
TOLERANCE UNLESS NOTED DIMENSIONS ± .015		FINISH	
SCALE 1" = 1"		AM-336	
SHEET 2 OF 16		REVISION B	

A	B	C	D	E	F	G	H	J	K	L	M	N	P	R	S	U	V	M _x	T
---	---	---	---	---	---	---	---	---	---	---	---	---	---	---	---	---	---	----------------	---

REVISIONS	
BH	59086
BJ	61847
BK	66123
BL	73425
BM	91847

CIRCUIT PROTECTORS FOR PORTABLE AND STANDBY ELECTRICAL GENERATORS

FIRST DECISION					
HANDLE		POLES		CONFIGURATION	
PP	PUSH-PULL	1	SINGLE POLE	1	SERIES CIRCUIT BREAKER
PR	PUSH-TO-RESET	2	TWO POLE (ROCKER HANDLE ONLY)	5	SERIES W/ SILVER * AUXILIARY SWITCH
R	ROCKER				
* SEE NOTE 14 ON PAGE 1 FOR SWITCH RATING					

SECOND DECISION	
-61	FAST 50/60 Hz
-62	SLOW 50/60 Hz
-69	INSTANT 50/60 Hz
-61F	FAST WITH INERTIA WHEEL 50/60 Hz
-62F	SLOW WITH INERTIA WHEEL 50/60 Hz

FOURTH DECISION
(SEE SHEET 5)

R11-62-5.00A-B01CV-U

DESCRIPTION
MEETS U3,TC1,OL1 REQUIREMENTS CSA22.2 NO.100-04 (SEPT.2004) AIRPAX PART NUMBER MUST BE SPECIFIED WITH -U AT END OF PART NUMBER.

THIRD DECISION
RATED CURRENT (CIRCUIT BREAKER)
USE THREE NUMBERS TO PRINT REQUIRED CURRENT VALUE BETWEEN 1.00 AMPS MINIMUM AND 30.0 AMPS MAXIMUM.

U = U3 APPROVAL

SHORT CIRCUIT INTERRUPTING CAPACITIES

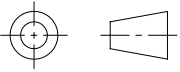
RATING	VOLTAGE RATING	SHORT CIRCUIT	CONFIG.
30A MAX.	125 VAC	300 A	1 POLE
	250 VAC, 1 ph 2 POLE BREAK	300 A	2 POLE



POWER CONTROLS
CAMBRIDGE, MD USA

DRAWN	C.H.	APPROVED	B.H.
CHECKED	P.A.Y.	DATE	9/11/95

213



THIRD ANGLE
PROJECTION

INTERPRET DRAWING
PER ANSI Y14.5M-1982

INCH
[MM]

TOLERANCE
UNLESS NOTED

INCH ±.015

MM ±.38

ANGLES ±5°

SNAPAK SPECIFICATION

MATERIAL

FINISH

SCALE

AM-336

SHEET
4 OF 16

REVISION
BM

A	B	C	D	E	F	G	H	J	K	L	M	N	P	R	S	U	V	Mx	T
---	---	---	---	---	---	---	---	---	---	---	---	---	---	---	---	---	---	----	---

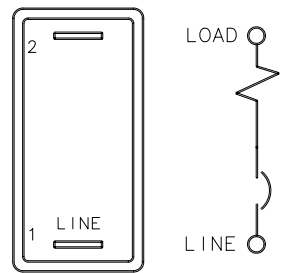
[illegible]

REVISIONS	
BH	59086
BJ	61847
BK	66123
BL	73425
BM	91847

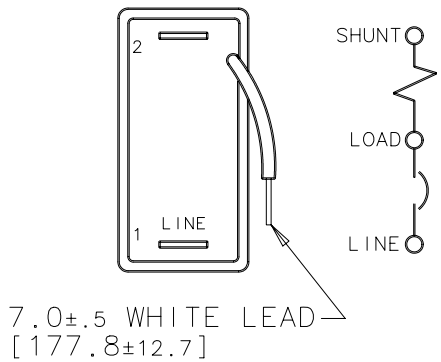
CONFIGURATIONS (SINGLE POLE)

AM-336

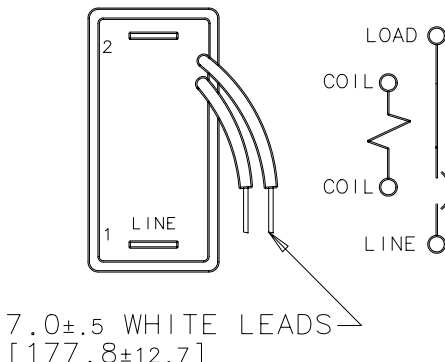
SHEET
7 OF 16



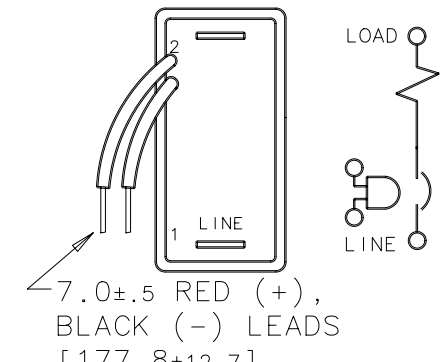
SERIES



SHUNT

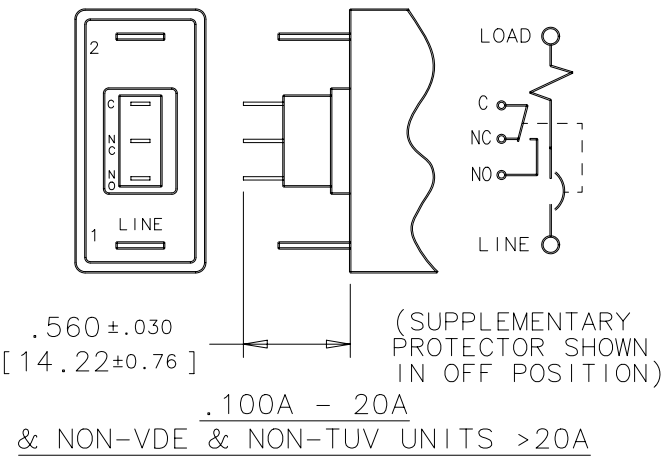


RELAY

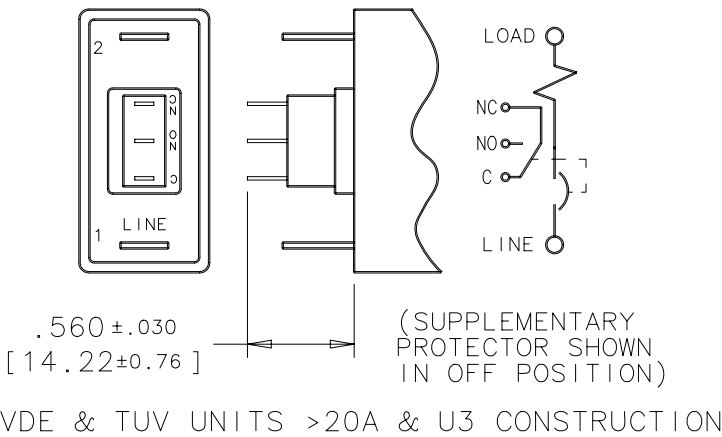


ILLUMINATED HANDLE

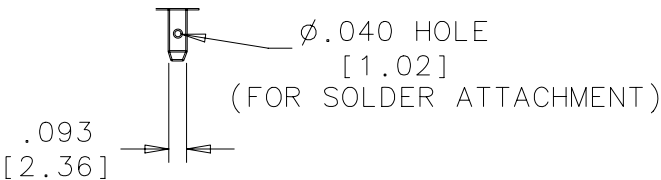
(ILLUSTRATED WITH
SERIES CONFIGURATION)



AUXILIARY SWITCH
(ILLUSTRATED WITH SERIES CONFIGURATION)



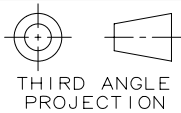
NOTE:
IN ADDITION TO THOSE SHOWN, ANY COMBINATION
OF THE FOLLOWING IS AVAILABLE: SHUNT OR
RELAY WITH ILLUMINATED HANDLE. SERIES WITH
AUXILIARY SWITCH AND ILLUMINATED HANDLE.



POWER CONTROLS
CAMBRIDGE, MD USA

DRAWN C.H. APPROVED B.H.
CHECKED P.A.Y. DATE 9/11/95

213



INTERPRET DRAWING
PER ANSI Y14.5M-1982

INCH
[MM]

TOLERANCE
UNLESS NOTED

INCH ±.015

MM ±.38

ANGLES ±5°

SNAPAK SPECIFICATION

MATERIAL

FINISH

SCALE
FULL

AM-336

SHEET
7 OF 16

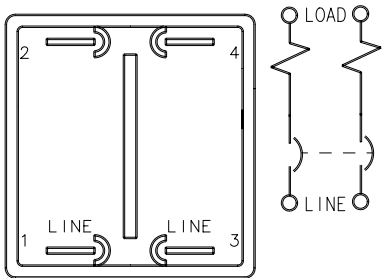
REVISION
BM

REVISIONS	
BH	59086
BJ	61847
BK	66123
BL	73425
BM	91847

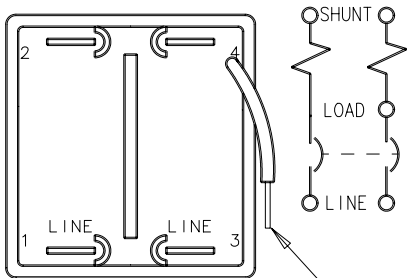
CONFIGURATIONS (TWO POLE)

AM-336

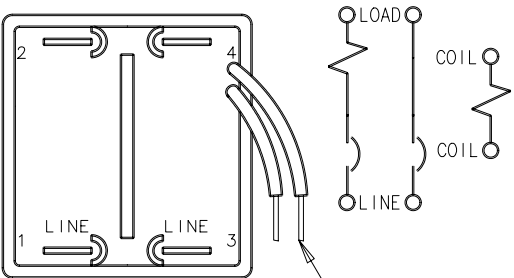
SHEET
8 OF 16



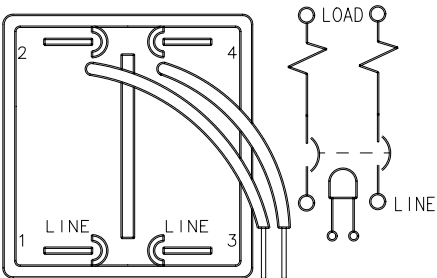
SERIES



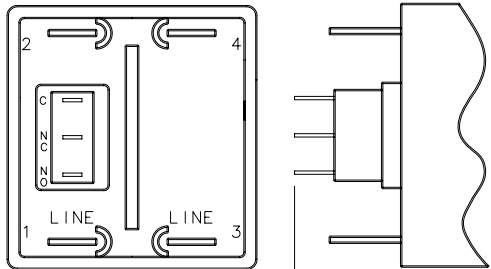
SHUNT



RELAY

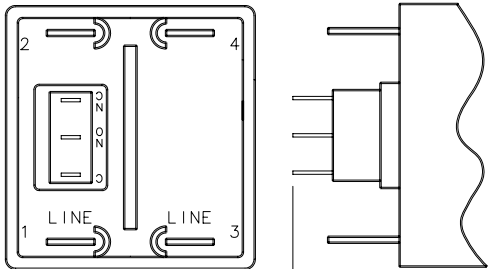


ILLUMINATED HANDLE
(ILLUSTRATED WITH
SERIES CONFIGURATION)

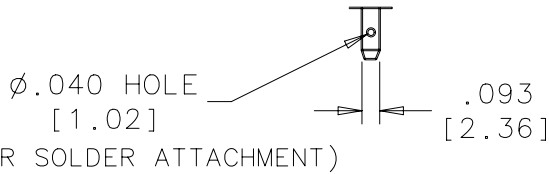


.560±.030
[14.22±0.76]
.100A - 20A
& NON-VDE & NON-TUV UNITS > 20A


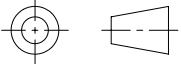
AUXILIARY SWITCH
(ILLUSTRATED WITH SERIES CONFIGURATION)



.560±.030
[14.22±0.76]
VDE & TUV UNITS >20A & U3 CONSTRUCTION



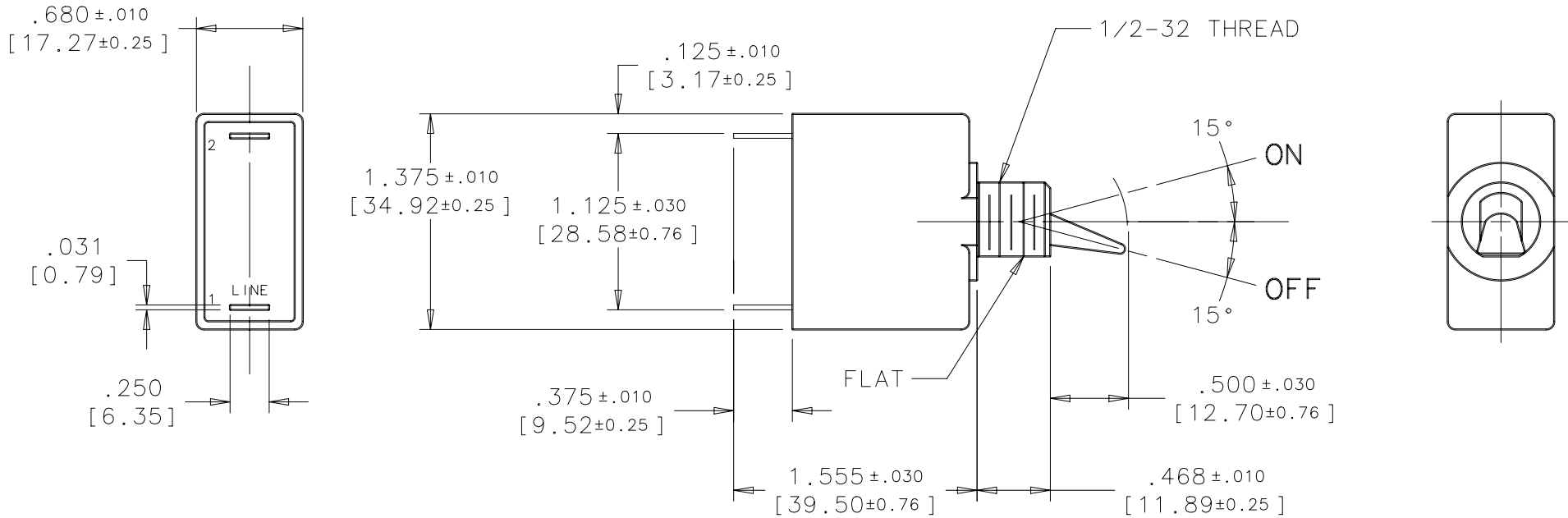
NOTE:
IN ADDITION TO THOSE SHOWN, ANY COMBINATION OF THE
FOLLOWING IS AVAILABLE: AUXILIARY SWITCH IN POLE 1.
SHUNT OR RELAY IN POLE 2 AND ILLUMINATED HANDLE.

<div>  <p>POWER CONTROLS CAMBRIDGE, MD USA</p> </div>		<div>  <p>THIRD ANGLE PROJECTION</p> </div>		SNAPAK SPECIFICATION	
				MATERIAL	
		TOLERANCE UNLESS NOTED		FINISH	
		INCH ±.015		SCALE FULL	
DRAWN C.H.	APPROVED B.H.	MM ±.38		AM-336	
CHECKED P.A.Y.	DATE 9/11/95	ANGLES ±5°		SHEET 8 OF 16	
213				REVISION BM	

A	B	C	D	E	F	G	H	J	K	L	M	N	P	R	S	U	V	Mx	T
---	---	---	---	---	---	---	---	---	---	---	---	---	---	---	---	---	---	----	---

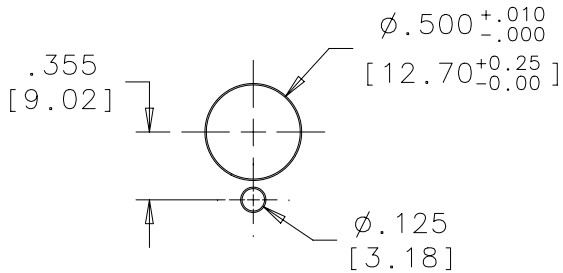
REVISIONS	
BH	59086
BJ	61847
BK	66123
BL	73425
BM	91847

PADDLE HANDLE - SINGLE POLE

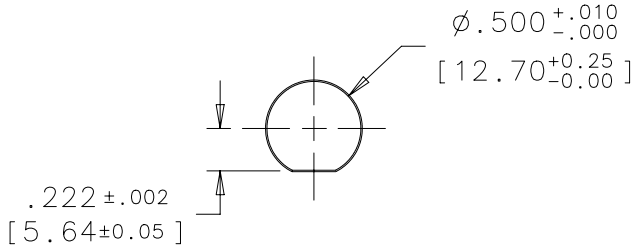


MOUNTING DETAILS

(SEE NOTES 6 & 7 ON SHEET 6)
TOLERANCE FOR MOUNTING ±.005 [0.13]
UNLESS NOTED OTHERWISE.

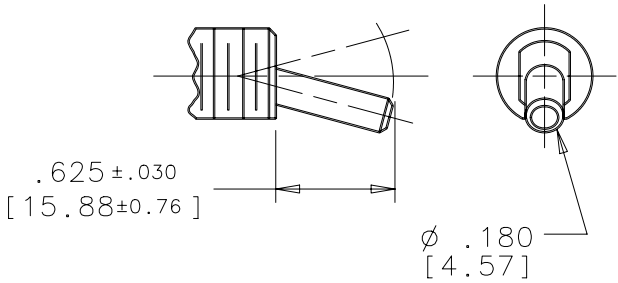


WITH LOCKING RING



WITHOUT LOCKING RING

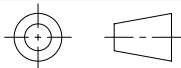
BATON HANDLE



POWER CONTROLS
CAMBRIDGE, MD USA

DRAWN	C.H.	APPROVED	B.H.
CHECKED	P.A.Y.	DATE	9/11/95

213



THIRD ANGLE
PROJECTION

INTERPRET DRAWING
PER ANSI Y14.5M-1982

INCH
[MM]

TOLERANCE
UNLESS NOTED

INCH ±.015

MM ±.38

ANGLES ±5°

SNAPAK SPECIFICATION

MATERIAL

FINISH

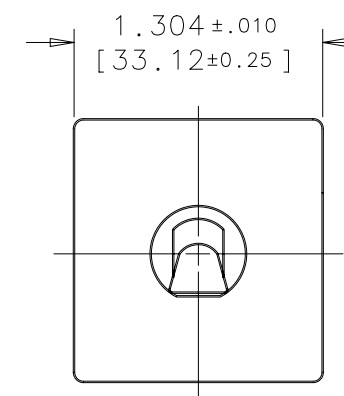
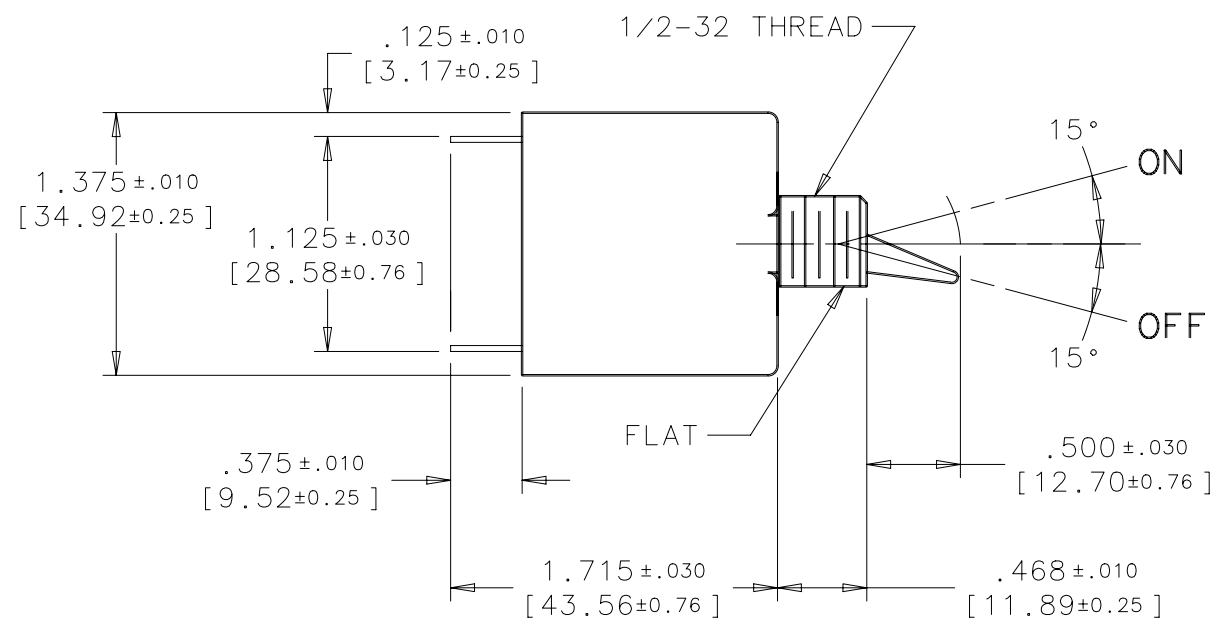
SCALE
FULL

AM-336

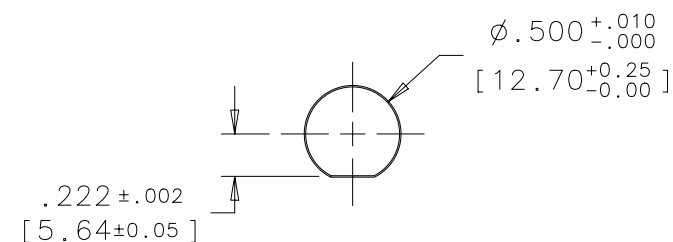
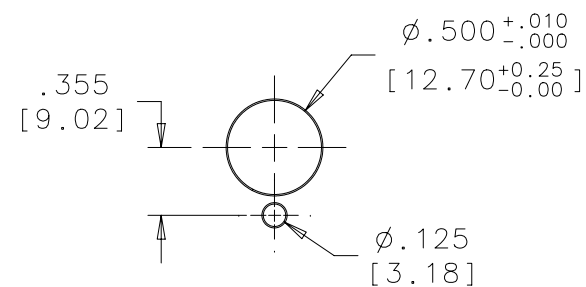
SHEET
10 OF 16

REVISION
BM

PADDLE HANDLE – TWO POLE

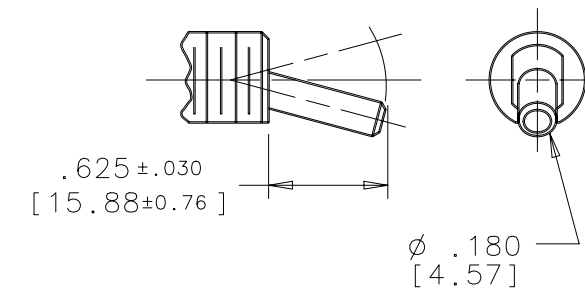
[illegible]

(SEE NOTES 6 & 7 ON SHEET 6)
TOLERANCE FOR MOUNTING $\pm .005$ [0.13]
UNLESS NOTED OTHERWISE.




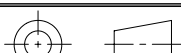
PANEL CUTOUT SHOWN ABOVE MAY BE MADE
WITH GREENLEE RADIO CHASSIS PUNCH
#733 X 1/2" DIA.

BATON HANDLE



WITH LOCKING RING

WITHOUT LOCKING RING

 Sensata Technologies		 THIRD ANGLE PROJECTION		SNAPAK SPECIFICATION			
POWER CONTROLS CAMBRIDGE, MD USA		INTERPRET DRAWING PER ANSI Y14.5M-1982		MATERIAL			
		INCH [MM]					
		TOLERANCE UNLESS NOTED		FINISH			
DRAWN C.H.		APPROVED B.H.					
CHECKED P.A.Y.		DATE 9/11/95					
213		INCH $\pm .015$		SCALE FULL		AM-336	
		MM $\pm .38$				SHEET 11 OF 16	
		ANGLES $\pm 5^\circ$				REVISION BM	

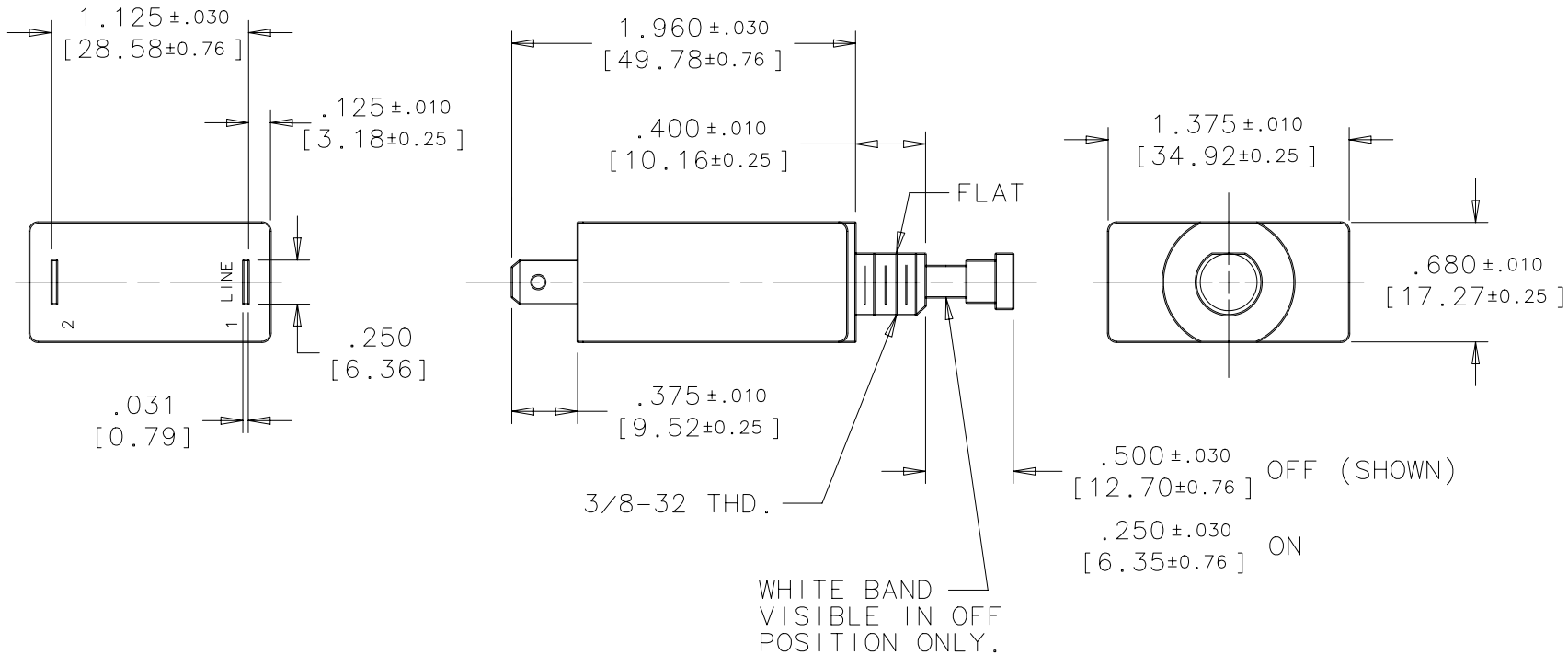
C-1012 7/00 35469

REVISIONS	
BH	59086
BJ	61847
BK	66123
BL	73425
BM	91847

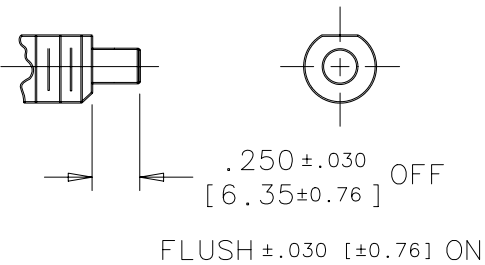
PUSH-PULL ACTUATION - SINGLE POLE

AM-336

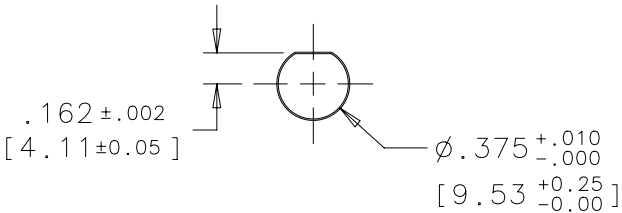
SHEET
12 OF 16



PUSH-TO-RESET ACTUATION



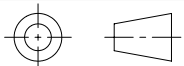
MOUNTING DETAIL



POWER CONTROLS
CAMBRIDGE, MD USA

DRAWN	C.H.	APPROVED	B.H.
CHECKED	P.A.Y.	DATE	9/11/95

213



THIRD ANGLE
PROJECTION

INTERPRET DRAWING
PER ANSI Y14.5M-1982

INCH
[MM]

TOLERANCE
UNLESS NOTED

INCH ± .015

MM ± .38

ANGLES ± 5°

SNAPAK SPECIFICATION

MATERIAL

FINISH

SCALE
FULL

AM-336

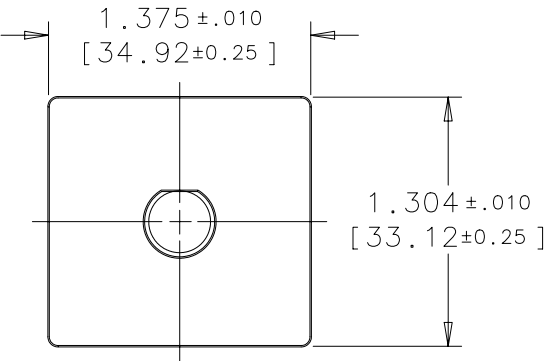
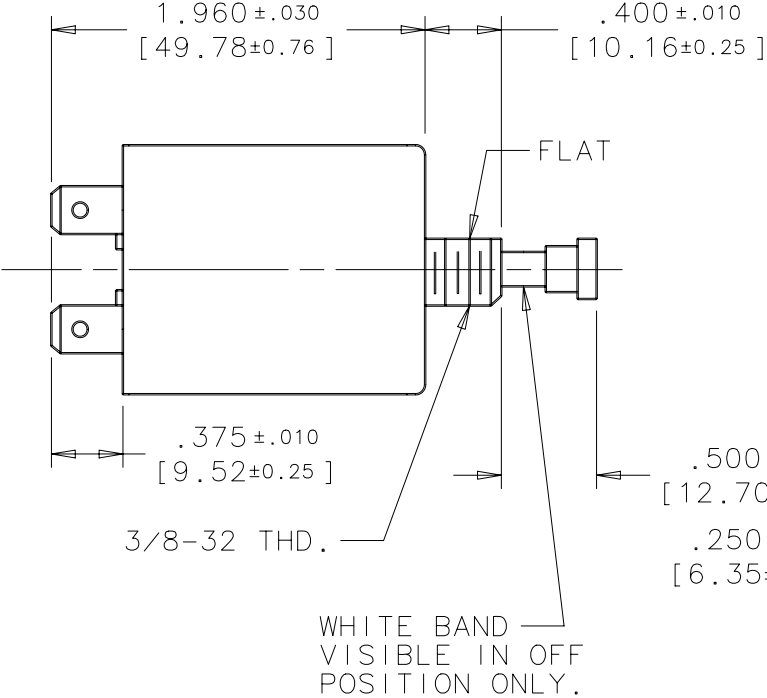
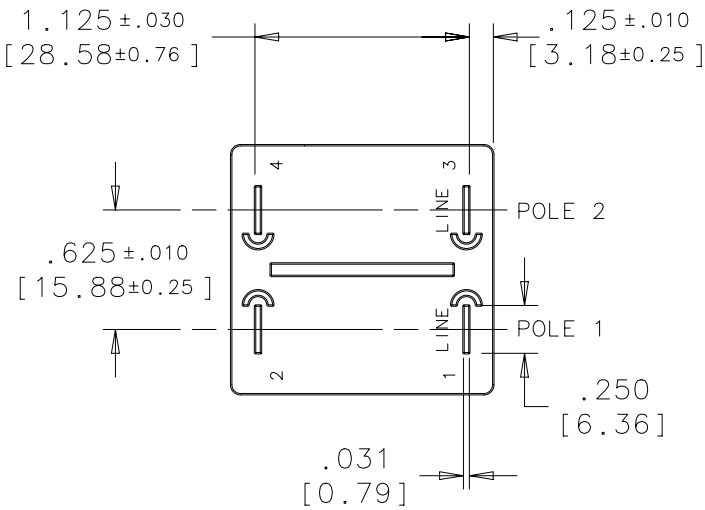
SHEET
12 OF 16

REVISION
BM

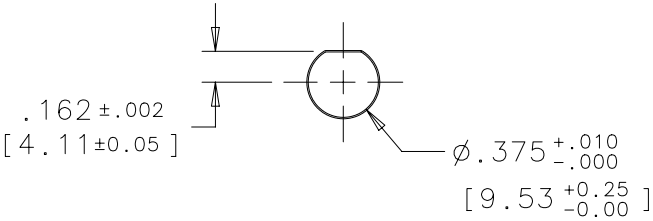
A	B	C	D	E	F	G	H	J	K	L	M	N	P	R	S	U	V	Mx	T
---	---	---	---	---	---	---	---	---	---	---	---	---	---	---	---	---	---	----	---

REVISIONS	
BH	59086
BJ	61847
BK	66123
BL	73425
BM	91847

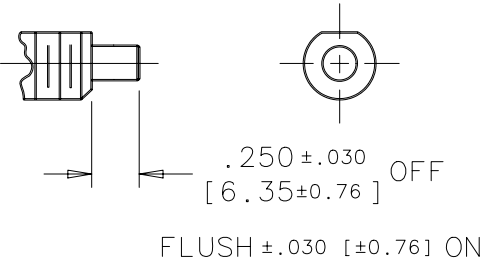
PUSH-PULL ACTUATION - TWO POLE



MOUNTING DETAIL



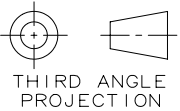
PUSH-TO-RESET ACTUATION



POWER CONTROLS
CAMBRIDGE, MD USA

DRAWN	C.H.	APPROVED	B.H.
CHECKED	P.A.Y.	DATE	9/11/95

213



THIRD ANGLE
PROJECTION

INTERPRET DRAWING
PER ANSI Y14.5M-1982

TOLERANCE
UNLESS NOTED

INCH ±.015

MM ±.38

ANGLES ±5°

SNAPAK SPECIFICATION

MATERIAL

FINISH

SCALE
FULL

AM-336

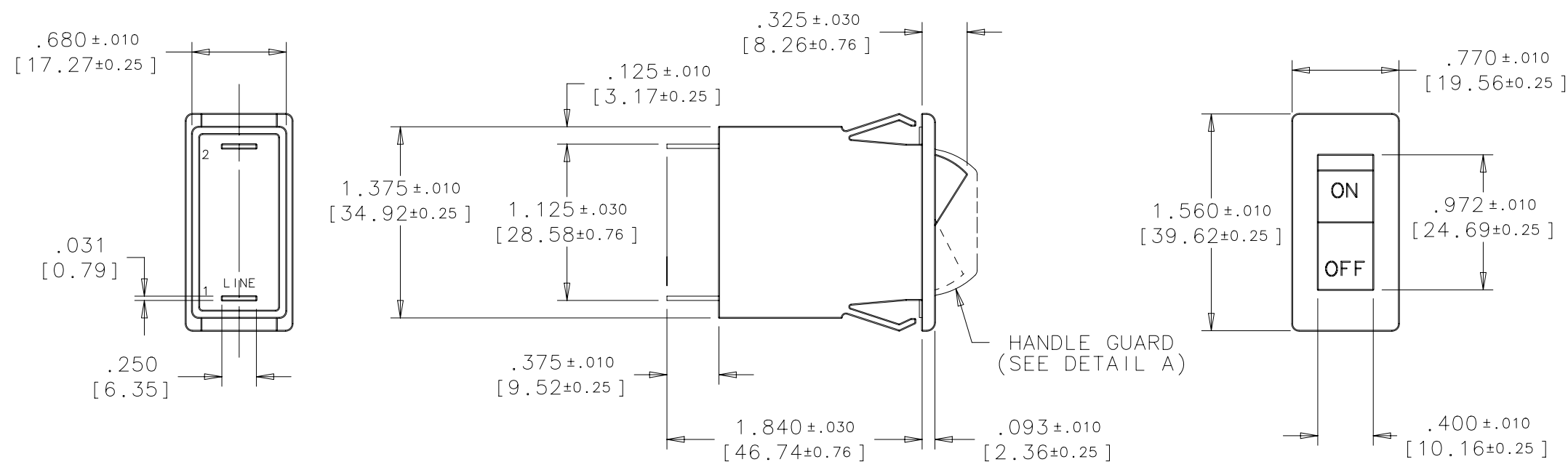
SHEET
13 OF 16

REVISION
BM

REVISIONS	
BH	59086
BJ	61847
BK	66123
BL	73425
BM	91847

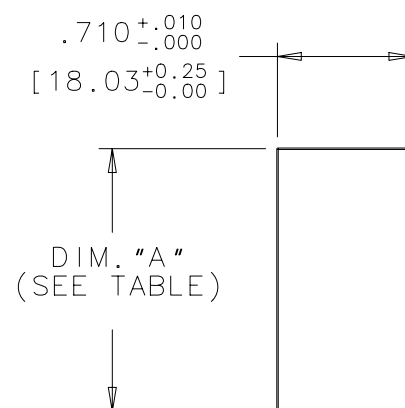
ROCKER - SINGLE POLE

AM-336 SHEET
14 OF 16

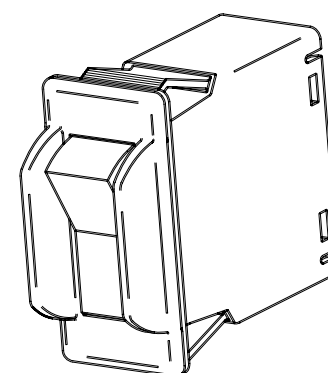


MOUNTING DETAILS



TOLERANCE FOR MOUNTING $\pm .005$ [0.13]
UNLESS NOTED OTHERWISE.



.125 [3.18]	1.460 [37.08]
.093 [2.36]	1.420 [36.07]
.062 [1.57]	1.385 [35.18]
PANEL THICKNESS	DIM. "A"



DETAIL A

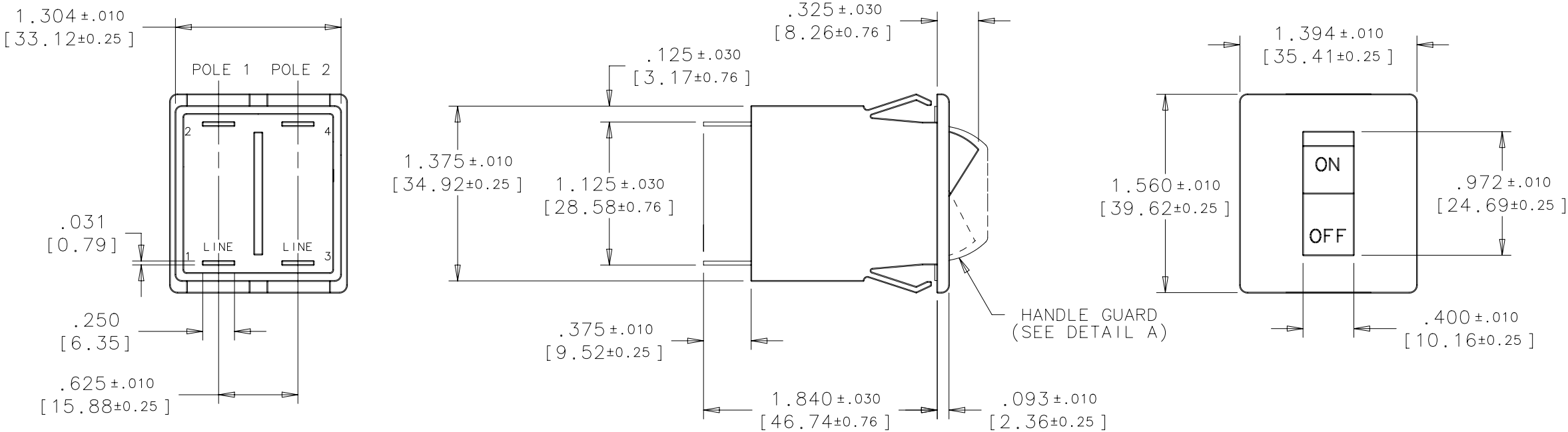
 Sensata Technologies		 THIRD ANGLE PROJECTION		SNAPAK SPECIFICATION			
POWER CONTROLS CAMBRIDGE, MD USA		INTERPRET DRAWING PER ANSI Y14.5M-1982		MATERIAL			
		INCH [MM]					
		TOLERANCE UNLESS NOTED					
DRAWN C.H.		APPROVED B.H.		FINISH			
CHECKED P.A.Y.		DATE 9/11/95					
213		INCH $\pm .015$					
		MM $\pm .38$		SCALE FULL			
		ANGLES $\pm 5^\circ$					
				AM-336			
				SHEET 14 OF 16			
				REVISION BM			

REVISIONS	
BH	59086
BJ	61847
BK	66123
BL	73425
BM	91847

ROCKER - TWO POLE

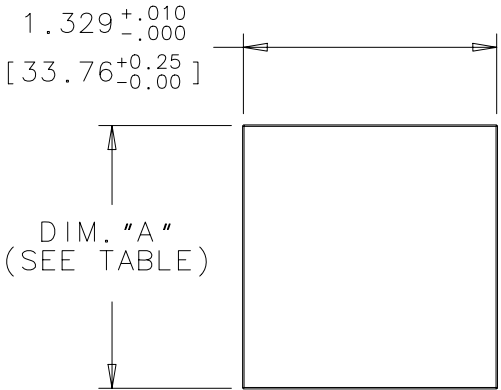
AM-336

SHEET
15 OF 16

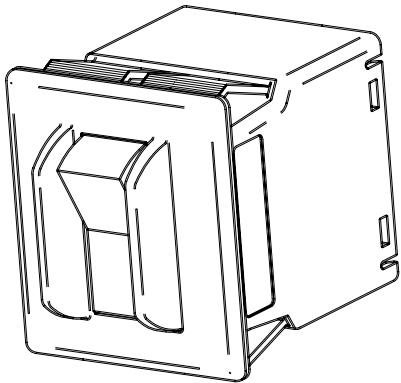


MOUNTING DETAIL

TOLERANCE FOR MOUNTING $\pm .005$ [0.13] UNLESS NOTED OTHERWISE.


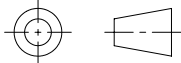


$.125$ [3.18]	1.460 [37.08]
$.093$ [2.36]	1.420 [36.07]
$.062$ [1.57]	1.385 [35.18]
PANEL THICKNESS	DIM. "A"



DETAIL A

A	B	C	D	E	F	G	H	J	K	L	M	N	P	R	S	U	V	Mx	T
---	---	---	---	---	---	---	---	---	---	---	---	---	---	---	---	---	---	----	---

<div><div>Sensata Technologies</div></div> <div>POWER CONTROLS CAMBRIDGE, MD USA</div>		<div><div>THIRD ANGLE PROJECTION</div></div>		SNAPAK SPECIFICATION							
		<div>INTERPRET DRAWING PER ANSI Y14.5M-1982</div>		MATERIAL							
		<div>INCH [MM]</div>									
		<div>TOLERANCE UNLESS NOTED</div>		FINISH							
<div>INCH ±.015</div>											
<div>DRAWN C.H. APPROVED B.H.</div>		<div>MM ±.38</div>		SCALE FULL		AM-336		SHEET 15 OF 16		REVISION BM	
<div>CHECKED P.A.Y. DATE 9/11/95</div>		<div>ANGLES ±5°</div>									
213											

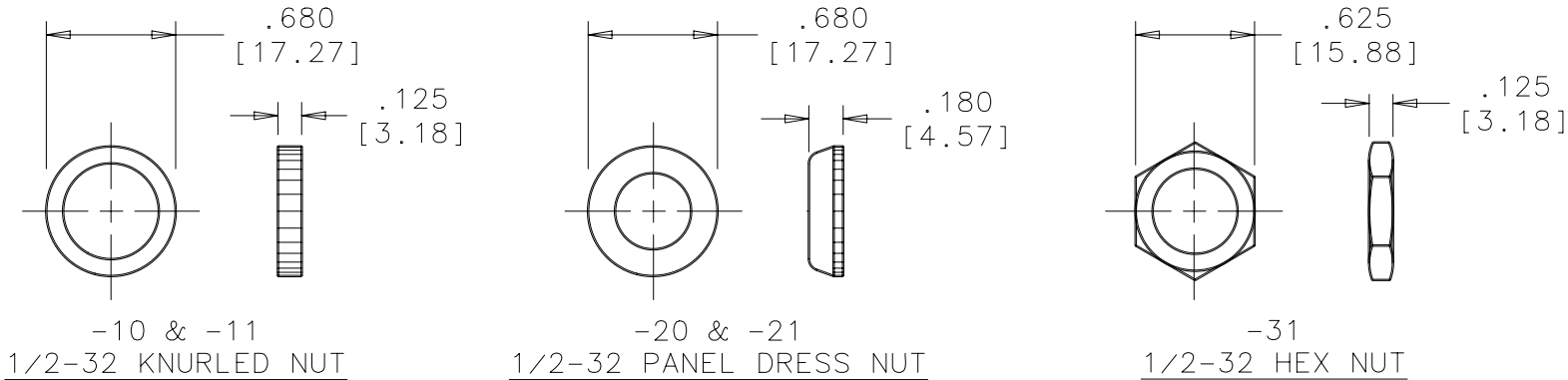
REVISIONS	
BH	59086
BJ	61847
BK	66123
BL	73425
BM	91847

HARDWARE & ACCESSORIES

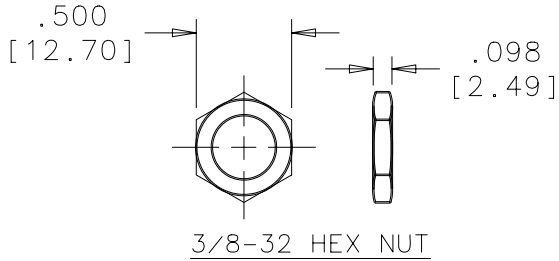
(SEE FIFTH DECISION SHEET 2 OR 3)
(SEE NOTES 2 & 3 SHEET 6)

AM-336

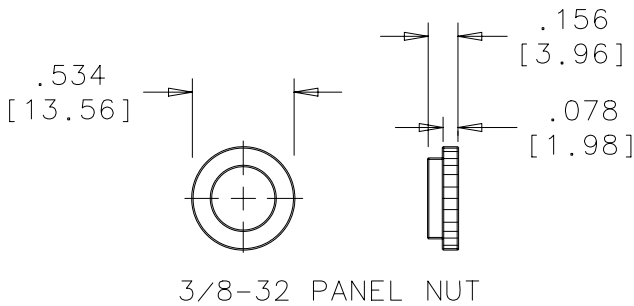
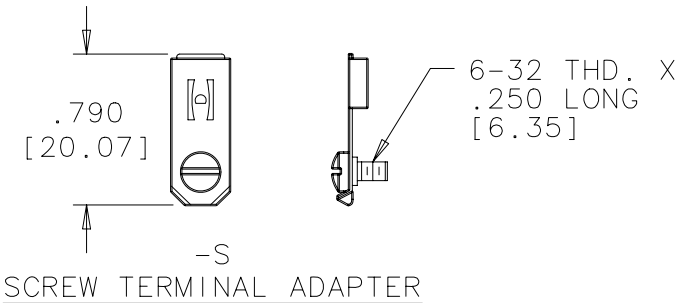
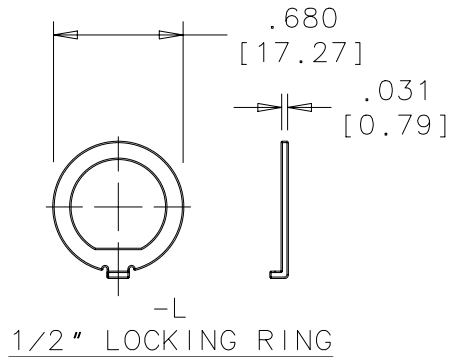
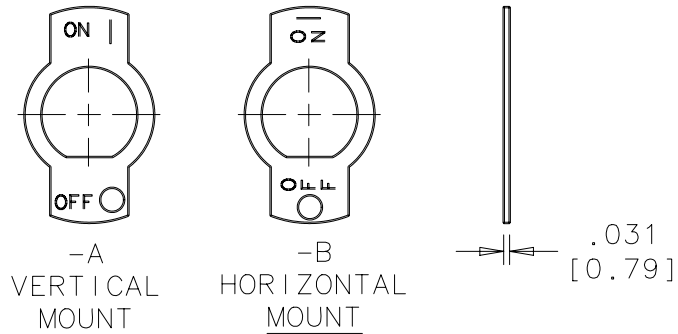
SHEET
16 OF 16



EACH PUSH-PULL (PP) AND PUSH-TO RESET (PR) UNIT WILL BE SUPPLIED WITH THE HARDWARE SHOWN BELOW.



1/2" INDICATOR PLATES

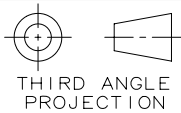


THIS NUT WHEN REVERSED WILL PROVIDE ALIGNMENT IN .437 [1.11] & .468 [11.88] DIA. ROUND PANEL HOLES.



POWER CONTROLS
CAMBRIDGE, MD USA

DRAWN	C.H.	APPROVED	B.H.
CHECKED	P.A.Y.	DATE	9/11/95
213			



INTERPRET DRAWING PER ANSI Y14.5M-1982	
INCH	[MM]
TOLERANCE UNLESS NOTED	
INCH	±.015
MM	±.38
ANGLES ±5°	

SNAPAK SPECIFICATION

MATERIAL

FINISH

SCALE
FULL

AM-336

SHEET
16 OF 16

REVISION
BM