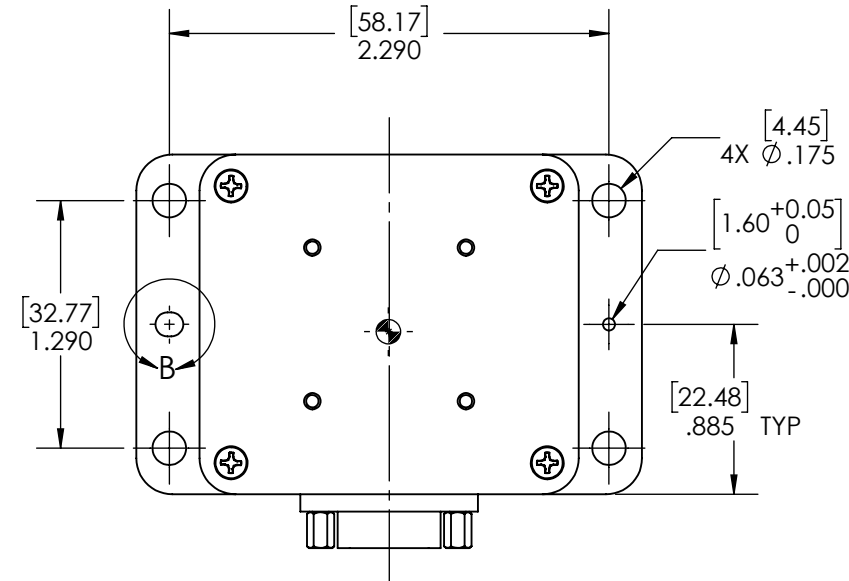
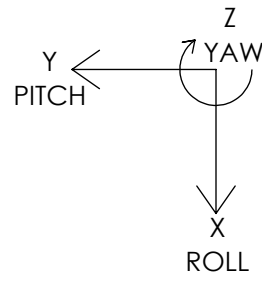


NOTES:

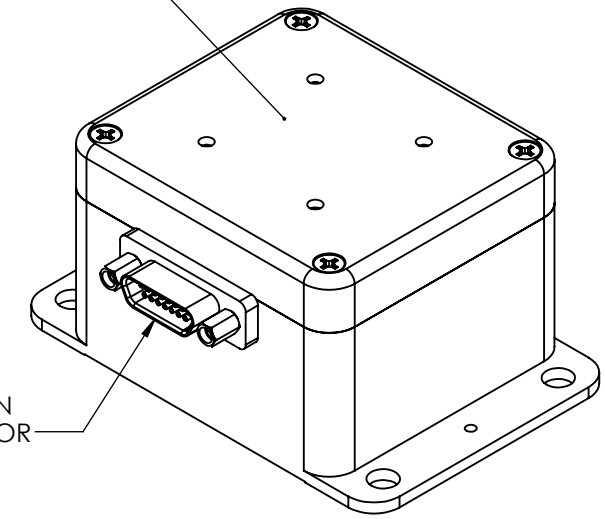
- USE ESD PROTECTION WHEN HANDLING
- PACKAGE WITH ESD SENSITIVE BAG
- POWER VOLTAGE RANGE + 7 V TO + 36 V
- WEIGHT: ≤ 115g
- FINISH: BLUE ANODIZE PER MIL-A-8625 TYPE II, CLASS II
- CHROMATE CONVERSION PER MIL-DTL-5541F, TYPE 1, CLASS 3 APPLIED TO SURFACE \square AND UNDERCUT RELIEF
- UNIT MOUNTING SURFACE: \square .001in \square .025mm
- UNIT MOUNTING SCREW TORQUE MIN: 48 in-oz [34 N-cm] **(MUST USE ALL 4 SCREWS AT ALL TIMES)**
- SHIPS WITH HARDWARE:
 - 4ea. M4 x .7 x 12mm AND 8-32 x 1/2 SCREWS
 - M83513/05-05 JACK SCREWS
 - M83513/03-B03N 15 PIN MATING CONNECTOR

| REVISIONS | | | | | |
|-----------|-----|------|------------------|------------|----------|
| ZONE | ECN | REV. | DESCRIPTION | DATE | APPROVED |
| | | A | ORIGINAL DRAWING | 10/18/2018 | MEA |

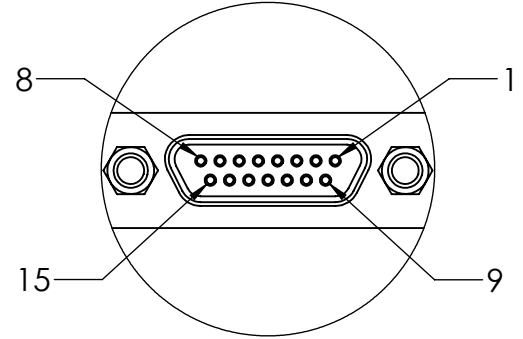
AXES (TOP VIEW)
RT HAND RULE



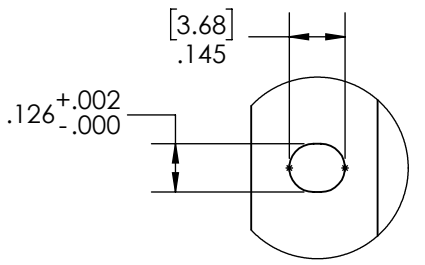
PART ID LABEL



M83513/04-B03N
UNIT CONNECTOR

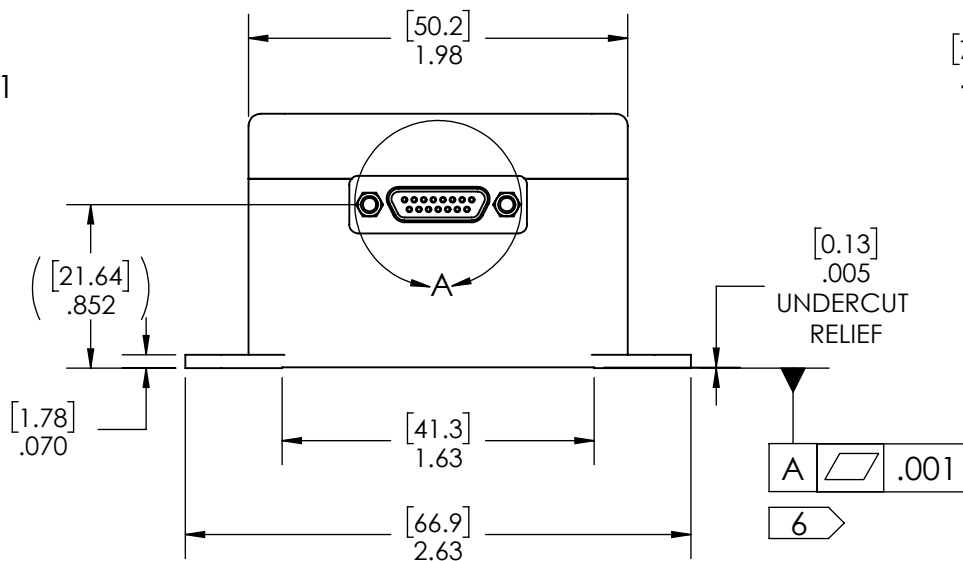


DETAIL A
SCALE 2 : 1

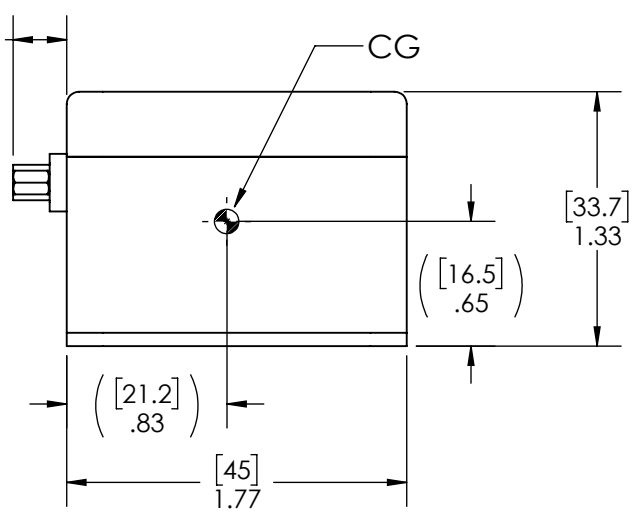


DETAIL B
SCALE 2 : 1

| PIN NO. | PIN ASSIGNMENT |
|---------|------------------------------------|
| 1 | RS-485 A (+) |
| 2 | RS-485 B (-) |
| 3 | POWER GROUND |
| 4 | ANALOG/ DIGITAL INPUT (0 V TO 5 V) |
| 5 | + 7 V TO + 36 V INPUT POWER |
| 6 | EXTERNAL SYNC INPUT |
| 7 | +5V OUTPUT |
| 8 | SIGNAL GROUND |
| 9 | SELF TEST |
| 10 | CANBUS HIGH |
| 11 | CANBUS LOW |
| 12 | CANBUS GROUND |
| 13 | NOT CONNECTED |
| 14 | NOT CONNECTED |
| 15 | CASE GROUND |



[7.1 MAX]
.28 MAX



THIS DOCUMENT IS AN UNPUBLISHED WORK. COPYRIGHT 2018
GLADIATOR TECHNOLOGIES ALL RIGHTS RESERVED.

THIS DOCUMENT AND ALL INFORMATION AND EXPRESSION CONTAINED
HEREIN ARE THE PROPERTY OF GLADIATOR TECHNOLOGIES AND
ARE PROVIDED TO THE RECIPIENT IN CONFIDENCE ON A "NEED TO
KNOW" BASIS. YOUR USE OF THIS DOCUMENT CONSTITUTES ACCEPTANCE
OF THESE TERMS.

INFORMATION CONTAINED IN THIS DOCUMENT IS SUBJECT TO U.S. EXPORT
LAWS AS DEFINED IN THE EXPORT ADMINISTRATION REGULATIONS (EAR)
AND/OR THE INTERNATIONAL TRAFFIC AND ARMS REGULATIONS (ITAR).
ILLEGAL EXPORT IS PROHIBITED.

Commercial Distribution Authorized per Commodity Classification ECCN7A994
(T-5 Countries Distribution Prohibited) Non-Technical Detail and is Non-ITAR

TYPED SIGNATURES CONSTITUTE APPROVAL. ACTUAL SIGNATURES
ON FILE AT GLADIATOR TECHNOLOGIES IN SNOQUALMIE, WA



| | | | | | |
|--|---------------|--|----------------------------|--|--------------|
| UNLESS OTHERWISE SPECIFIED | | CONTRACT NO. | | GLADIATOR TECHNOLOGIES SNOQUALMIE, WA | |
| ALL DIMENSIONS ARE IN INCHES AND () METRIC - TOLERANCES UNLESS SPECIFIED ARE: | TOL. | .XX | ±.01 | DRAWN | JTZ 08/24/18 |
| | | .XXX | ±.002 | CHECKED | MEA 10/18/18 |
| FINISH: | SEE NOTES | ANGLE | ±X° | MECH.ENG. | JTZ 08/24/18 |
| PRECIOUS METAL INDICATOR CODE A | | INTERPRET DRAWING PER ASME Y14.100 BREAK ALL SHARP EDGES | | Q.A. | RCB 10/18/18 |
| DASH NO. | NEXT ASSY DWG | TOP LEVEL APPLICATION | | APPD. | MKC 10/18/18 |
| TITLE: LMRK65IMU OUTLINE | | SIZE: B | DWG. NO. 990-LMRK65-IMU | REV. A | |
| SCALE: | | CAGE CODE: 47L11 | SHEET: 1 OF 1 | | |