

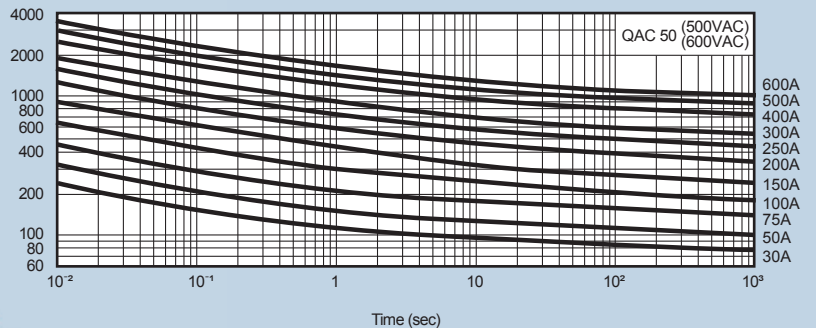
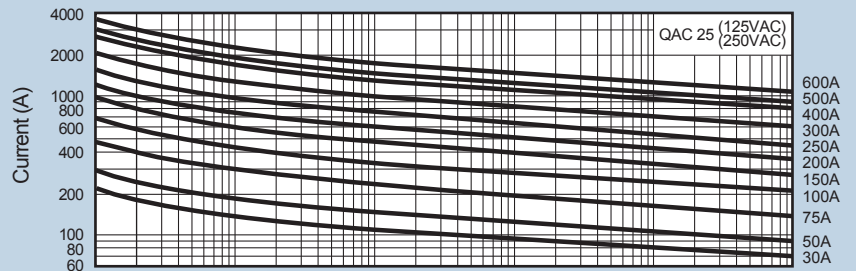
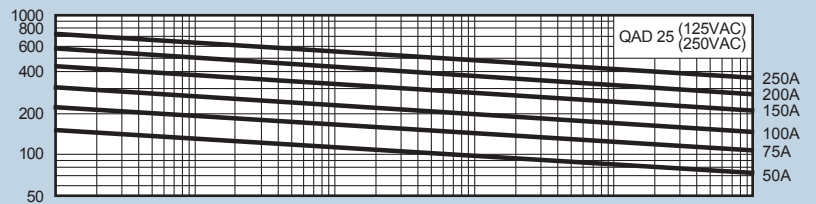
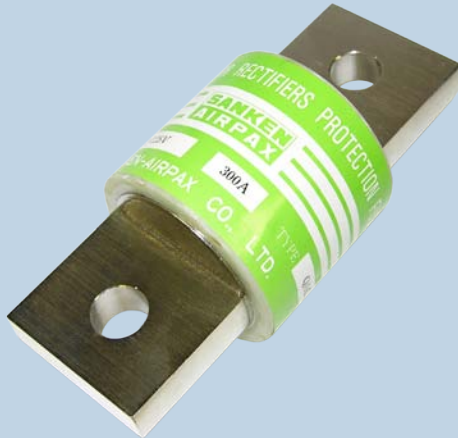
QAC & QAD Quick-Action Fuses

AIRPAX

Applications: Typical applications include inverters, arc welders, rectifiers, CNC equipment, battery circuits, and other protective applications.

Features:

- Axial bolted tag connectors for easy installation
- Large breaking capacity (50kA)
- Low I²t value, semiconductor protection balance can be easily obtained
- Compact and lightweight
- Resistant to repetitive currents
- Excellent current-limiting characteristics
- Low power loss



Overcurrent Protection for Semiconductor Elements and Cables

The QAC and QAD product lines feature axial bolted tag connectors and carry a rated voltage of up to 600 VAC, 600A max, 50K AIC. They feature a high current-limiting effect and superior quick-action fusing performance, excellent arc-suppressing performance, and reliable breaking action. Because of their low power loss, they save energy and also feature low surge voltage at the breaking point. Superior non-degradation characteristics make it ideal for motors subject to extreme load variations.

Specifications:

- Rated voltage: 125-600V_{AC}
- Rated current: 30A-600A
- Breaking capacity: 50kA at 125V_{AC}, 250V_{AC}, 500V_{AC} and 600 V_{AC}
- Power loss: 3W-36W
- Connecting bar: 0.012-0.465in² (8-300mm²)
- I²t (A²S)X10³: Pre-arcing = .013-8.64 ; Operating at 250V_{AC} = .31-77.8 ; Operating at 500V_{AC} & 500V_{AC} = 1.36-154

AIRPAX
www.airpax.net

Airpax Corporation
807 Woods Road
Cambridge, MD 21613 USA
Tel: 410.228.1500 Fax: 410.228.3456

Ratings & Specifications

Model	Rated Voltage	Rated Current (A)	Breaking Capacity	Power Loss				$I^2t(A^2s) \times 10^3$		External dimensions: in (mm)							Mounting Hole, Bolt Size Limit
				(W)	Connecting Bar		Pre-Arcing	Operating at V_{AC}	A	B	C	E	W	T	D		
					in ²	mm ²											
QAD25-50	125 / 250 V_{AC}	50	50kA	3.0	0.034	22	0.013	1.4	3.150 (80)	2.283 (58)	1.496 (38)	Ø1.102 (Ø28)	0.866 (22)	0.197 (5)	Ø0.335 (Ø8.5)	≤ 5/16 - 18	
QAD25-75		75		5.0	0.059	38	0.03	2.4								≤ M8	
QAD25-100		100		6.5	0.155	100	0.053	3.98									
QAD25-150		150		10.0	0.155	100	0.12	7.00									
QAD25-200		200		13.0	0.233	150	0.21	9.45									
QAD25-250		250		16.5	0.372	240	0.32	14.4									
QAC25-30		30		3.0	0.012	8	0.034	0.31	3.071 (78)	2.362 (60)	1.496 (38)	Ø1.417 (Ø36)	1.181 (30)	0.276 (7)	Ø0.374 (Ø9.5)	≤ 3/8 - 16	
QAC25-50		50		4.3	0.034	22	0.6	0.54								≤ M9	
QAC25-75		75		7.5	0.059	38	0.15	1.35									
QAC25-100		100		10.0	0.155	100	0.31	2.77									
QAC25-150		150		15.0	0.155	100	0.62	5.54									
QAC25-200		200		20.0	0.233	150	0.96	8.64	3.898 (99)	2.795 (71)	1.496 (38)	Ø1.732 (Ø44)	1.378 (35)	0.354 (9)	Ø0.433 (Ø11.0)	≤ 3/8 - 16	
QAC25-250		250		25.0	0.372	240	1.6	14.0								≤ M11	
QAC25-300		300		30.0	0.372	240	2.8	25.2									
QAC25-400		400		35.0	0.465	300	5.04	45.4									
QAC25-500		500		20.0	0.465	300	6.0	54.0									
QAC25-600		600		18.0	0.465	300	8.64	77.8									
QAC50-30		500 / 600 V_{AC}		30	3.6	0.012	8	0.04	1.36	(117)	(89)	(56)	(Ø36)	(30)	(7)	(Ø9.5)	≤ M9
QAC50-50				50	6.0	0.034	22	0.07	2.5								≤ 3/8 - 16
QAC50-75				75	9.0	0.059	38	0.14	4.89								
QAC50-100	100		12.0	0.155	100	0.28	9.98										
QAC50-150	150		19.5	0.155	100	0.55	19.5										
QAC50-200	200		24.0	0.233	150	1.09	38.7	(117)	(89)	(56)	(Ø44)	(35)	(9)	(Ø11.0)	≤ M11		
QAC50-250	250		30.0	0.372	240	1.75	62.1	4.606	3.504	2.205	Ø1.732	1.378	0.354	Ø0.433	≤ 3/8 - 16		
QAC50-300	300		36.0	0.372	240	2.4	85.1										
QAC50-400	400		35.0	0.465	300	4.58	91.6	(117)	(89)	(56)	(Ø50)	(42)	(9)	(Ø11.0)	≤ M11		
QAC50-500	500		33.0	0.465	300	6.41	128.0	4.606	3.504	2.205	Ø1.969	1.654	0.354	Ø0.433	≤ 3/8 - 16		
QAC50-600	600	32.0	0.465	300	7.71	154.0											

