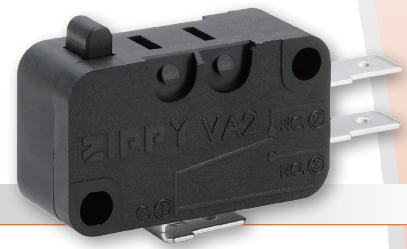


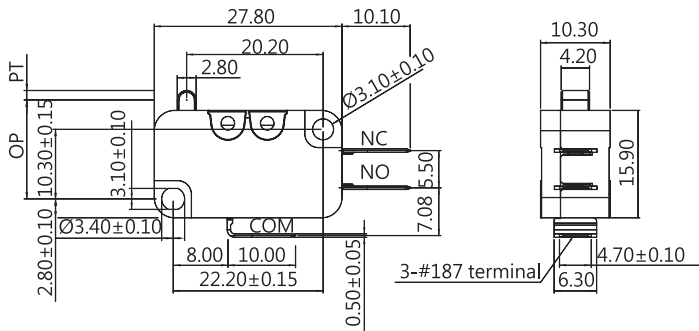
VA2 Series Microswitches

- High quality microswitches for a wide range of applications
- Designed for footswitch, hand control, joystick etc
- Excellent performance, high reliability and long service life
- UL/cUL and ENEC certification

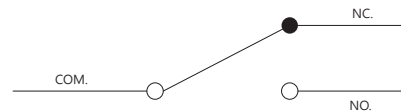


Reference dimensions mm

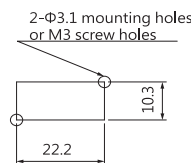
Unless otherwise specified, a tolerance of ± 0.4 mm applies to all dimensions.



Contact configuration



Mounting holes



General specifications

Contact resistance (initial)	Max. 100 mΩ Measured by ohm meter - open voltage < 1VDC, driver current -100 mA
Insulation Resistance (at 500 VDC / minute)	Min. 100 MΩ
Dielectric Strength	Min. 500VAC (50-60HZ)/minute between Live parts. Min. 1500VAC (50-60HZ)/minute between Live parts and dead metal parts
Operating Temperature Range	-40°C to 125°C (with no icing)

Vibration	10~55Hz, displacement 0.75 mm (p-p)
Electrical Service Life	Min. 10,000 operations
Electrical Operating Frequency	10~30 operations per minute
Mechanical Service Life	Min. 1,000,000 operations
Mechanical Operating Frequency	120 operations per minute
Operating application of the switch	Set the switch pushing distance from 60% to 90% of the specified OT value

Certification information

Model Name	UL - cUL	ENEC
VA2-P1	0.1RA 125/250VAC μ T125 1E4	0.1A 125/250VAC μ T125 1E4
VA2-03	3RA 125/250VAC μ T125 1E4	3A 125/250VAC μ T125 1E4
VA2-06	6RA 125/250VAC μ T125 1E4	6A 125/250VAC μ T125 1E4
VA2-10	10RA 125/250VAC μ T125 1E4	10(4)A 125/250VAC μ T125 1E4
VA2-16	16RA 16GPA 125/250VAC μ T125 1E4 1/2HP 125/250VAC μ T55 1E4	16(4)A 125/250VAC μ T125 1E4
VA2-20	20RA 125/250VAC μ T125 1E4 1/2HP 125/250VAC μ T55 1E4	20A 125/250VAC μ T125 1E4
VA2-26	26RA 125/250VAC μ T55 1E4	26A 125/250VAC μ T55 1E4
VA2-A03	3GPA 125/250VAC μ T85 1E4	3A 125/250VAC μ T85 1E4
VA2-A06	6GPA 125/250VAC μ T85 1E4	6A 125/250VAC μ T85 1E4
VA2-T6	6RA 125/250VAC μ T200 1E4	6A 125/250VAC μ T200 1E4

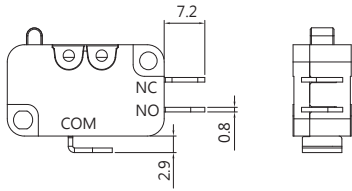
Selection of rating & force

MODEL	Rating	B	D	N	L	S	H	Q
VA2	0.1A	✓	✓	✓	✓	✓	✓	✓
	3A	✓	✓	✓	✓	✓	✓	✓
	6A		✓	✓	✓	✓	✓	✓
	10A 10(4)A				✓	✓	✓	✓
	16A 16(4)A					✓	✓	✓
	20A					✓	✓	✓
	26A						✓	✓
	6A T200						✓	✓

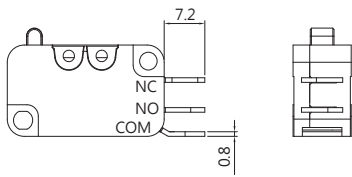
NOTE: The symbol " ✓ " represents the result is accepted

Terminal types

A TYPE

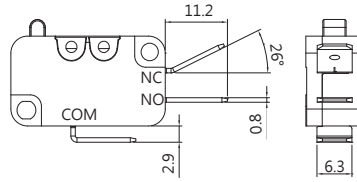


STANDARD

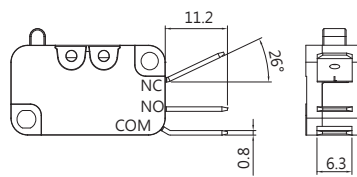


SIDE OUT

C TYPE
250 terminal
(6.3x0.8)

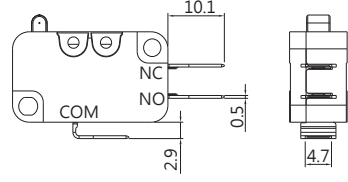


STANDARD

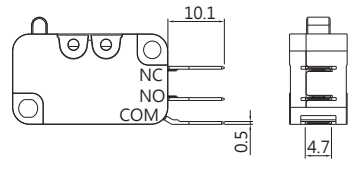


SIDE OUT

D TYPE
187 terminal
(4.7x0.5)

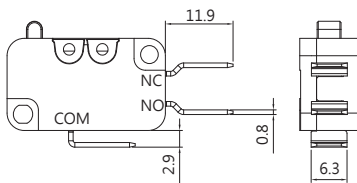


STANDARD



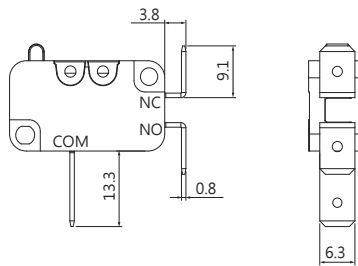
SIDE OUT

E TYPE
250 terminal
(6.3x0.8)



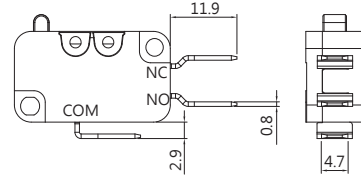
STANDARD

F TYPE
250 terminal
(6.3x0.8)



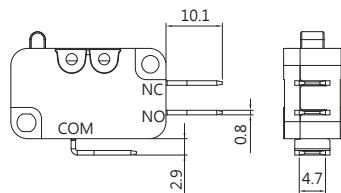
STANDARD

I TYPE
187 terminal
(4.7x0.8)



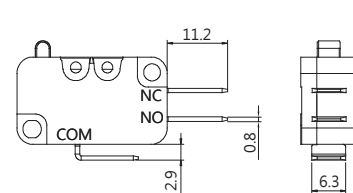
STANDARD

H TYPE
187 terminal
(4.7x0.8)



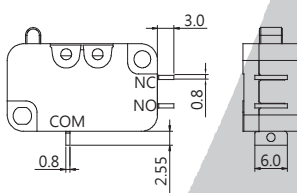
STANDARD

R TYPE
250 terminal
(6.3x0.8)

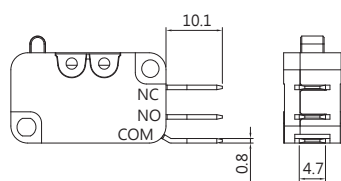


STANDARD

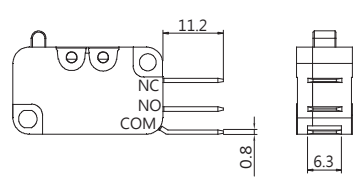
J TYPE
250 terminal
(6.0x0.8)



STANDARD

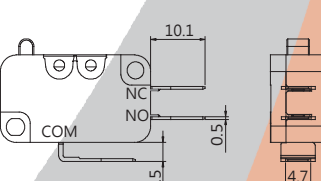


SIDE OUT



SIDE OUT

L TYPE
187 terminal
(4.7x0.5)



STANDARD

VA2 Series Microswitches

herga

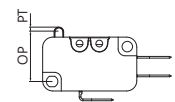
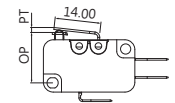
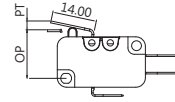
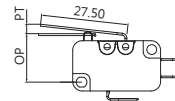
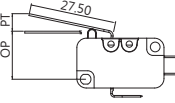
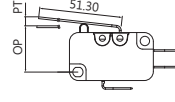
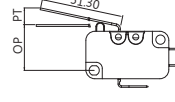
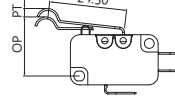
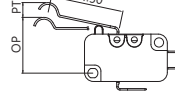
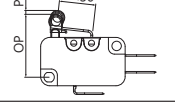
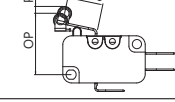
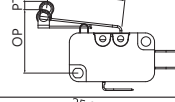
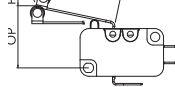
Technology Ltd

Ordering information

SERIES PREFIX	CODE	RATING CURRENT	CODE	OPERATING FORCE	CODE	EXTERIOR TYPE	CODE	MOUNTING HOLES TYPE	CODE	ACTUATOR TYPE	CODE	TERMINAL TYPE	CODE	CIRCUIT ARRANGEMENT	ROHS CODE
V A 2	1 6		S		0				0 0	D			0	Z	
	P1	0.1A 125/250VAC T125	Q	HEAVIER	0	STANDARD TERMINAL NO ACTUATOR			00	No Lever	A	STANDARD		0	S.P.D.T
	03	3A 125/250VAC T125	H	HEAVY	1	STANDARD TERMINAL ACTUATOR AWAY BUTTON	A	MOUNTING HOLES Ø3.1	01			H	STANDARD	1	S.P.S.T NO
	06	6A 125/250VAC T125	S	STANDARD	2	STANDARD TERMINAL ACTUATOR NEAR BUTTON		MOUNTING HOLES Ø2.9	02			SIDE OUT	SIDE OUT	2	S.P.S.T NC
	10	10A 10(4)A 125/250VAC T125	L	LIGHT	3	SIDE OUT TERMINAL NO ACTUATOR			03			I	STANDARD		
	16	16A 16(4)A 125/250VAC T125	N	SLIGHT	4	SIDE OUT TERMINAL ACTUATOR AWAY BUTTON			04			J	STANDARD		
	20	20A 125/250VAC T125	D	LIGHTNESS	5	SIDE OUT TERMINAL ACTUATOR NEAR BUTTON			:	:		K	STANDARD		
	26	26A 125/250VAC T55	B	EXTREMELY LIGHTNESS	6	SPECIAL TERMINAL NO ACTUATOR			:	:		L	STANDARD		
	A03	3A 125/250VAC T85			7	SPECIAL TERMINAL ACTUATOR AWAY BUTTON			:	:		R	STANDARD		
	A06	6A 125/250VAC T85			8	SPECIAL TERMINAL ACTUATOR NEAR BUTTON			:	:					
	T6	6A 125/250VAC T200													

# NOTE		
ITEM	RATING CURRENT	OPERATING FORCE
1	Code:P1	ALL
2	Code:03	ALL
3	Code:06	D,N,L,S,H,Q
4	Code:10	L,S,H,Q
5	Code:16	L,S,H,Q
6	Code:20	S,H,Q
7	Code:26	Q
8	Code:A03	ALL
9	Code:A06	D,N,L,S,H,Q
10	Code:T6	S,H,Q

Operating characteristics

SWITCH TYPE	PART SUFFIX	OF Max. (gf)							OP (mm)	PT Max. (mm)	OT Min. (mm)	MD Max. (mm)
		B	D	N	L	S	H	Q				
VA2- □□□ 0-00D0-Z		18	45	75	110	170	230	330	14.7±0.5	1.72	0.8	0.4
VA2- □□□ 1-01D0-Z		18	45	75	110	170	230	330	15.3±0.5	2.8	0.6	0.5
VA2- □□□ 2-01D0-Z		8	27	43	50	85	120	175	15.3±1.1	5.2	1.55	0.9
VA2- □□□ 1-02D0-Z		8	22	37	50	86	125	180	15.3±1.5	5.9	1.6	1.0
VA2- □□□ 2-02D0-Z		5	16	25	30	51	65	90	15.3±2.3	9.7	3.1	2.2
VA2- □□□ 1-03D0-Z		6	13	25	30	49	70	120	15.3±2.5	9.3	-	2.1
VA2- □□□ 2-03D0-Z		4	8	15	20	30	35	50	15.3±4.3	16.2	-	3.5
VA2- □□□ 1-04D0-Z		10	28	43	65	110	140	205	18.7±1.5	5.5	1.4	1.1
VA2- □□□ 2-04D0-Z		7	16	24	35	56	70	100	18.7±2.1	8.7	3.2	1.7
VA2- □□□ 1-05D0-Z		20	55	80	110	170	230	330	20.7±0.8	2.7	0.6	0.45
VA2- □□□ 2-05D0-Z		8	35	55	70	100	120	175	20.7±1.1	4.65	1.4	0.8
VA2- □□□ 1-06D0-Z		8	30	45	65	100	125	180	20.7±1.5	4.2	1.6	1.25
VA2- □□□ 2-06D0-Z		7	20	30	40	51	65	90	20.7±2.2	9.3	2.8	1.8