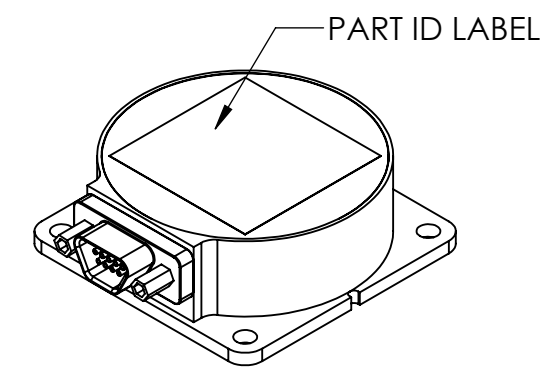
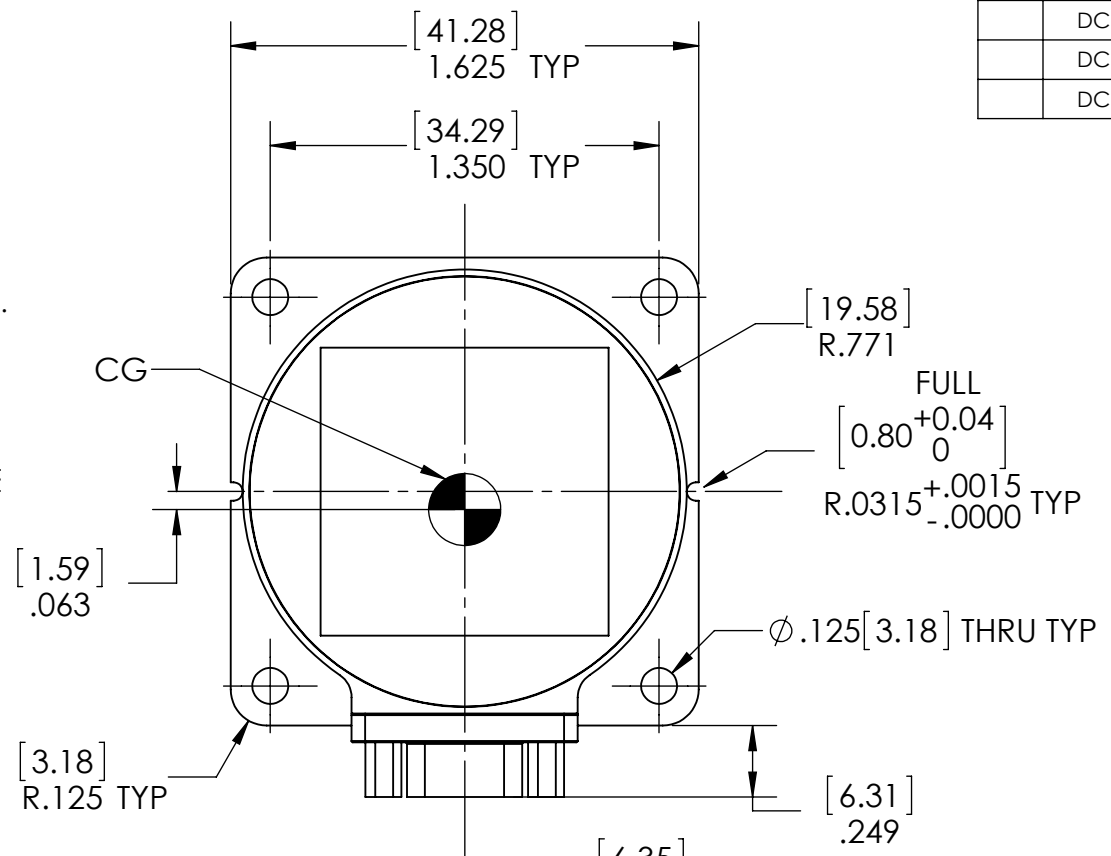


NOTES UNLESS OTHERWISE SPECIFIED:

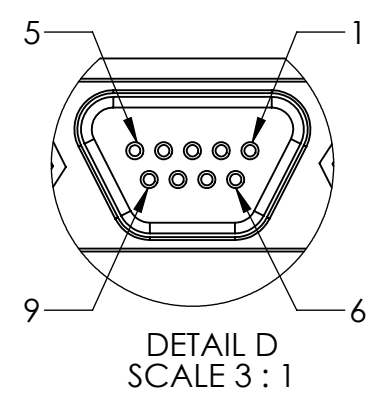
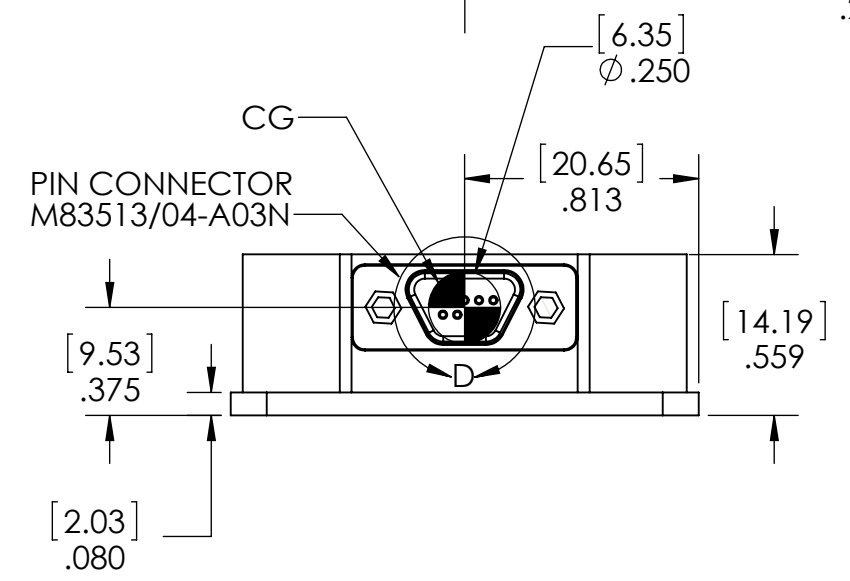
1. USER ESD PROTECTION WHEN HANDLING
2. PACKAGE WITH ESD SENSITIVE BAG
3. POWER VOLTAGE RANGE +4.75V DC TO +5.25V DC
4. WEIGHT: <28 GRAMS
5. FINAL FINISH: BLACK ANODIZE PER MIL-A-8625 TYPE II, CLASS II.
6. SHIPS WITH THE FOLLOWING MOUNTING KIT:
500-G50-ConnPin-004 (STANDARD)
500-G50-ConnPin-005 (METRIC)
7. RATE OUTPUT IS PIN 1 WITH RESPECT TO PIN 6
8. TEMPERATURE IS PIN 2 WITH RESPECT TO PIN 6.
9. SELF TEST ON IS 4V TO 5V ON PIN 7. SELF TEST OFF IS OPEN OR 0V tp 1V.
10. LOADS: > 5K OHMS AND <100pf ON GYRO, VREF & TEMP: <500pf

REVISIONS					
ZONE	ECN	REV.	DESCRIPTION	DATE	APPROVED
	DCR 012	A	ROLLED TO PRODUCTION	2/7/13	MEA
	DCR 142	B	CLARIFICATION ON PART IDENTITY	10/1/14	BCB
	DCR 155	C	REVISED NOTES AND PIN OUT TABLE	3/6/15	MEA

AXES (TOP VIEW)
RIGHT HAND RULE
+ω



PIN NO.	-1XX ASSIGNMENT	COLOR
1	GYRO RATE OUTPUT VOLTAGE +0V NOMINAL	BLACK
2	GYRO TEMPERATURE +2.5V @ 20 C°	BROWN
3	POWER GROUND	RED
4	GYRO +2.5V REFERENCE VOLTAGE	ORANGE
5	+4.75 TO +5.25V DC INPUT	YELLOW
6	SIGNAL GROUND	GREEN
7	SELF TEST INPUT	BLUE
8	BIT OUTPUT (5V LOGIC LEVEL = PASS)	PURPLE
9	CASE	GREY



THIS DOCUMENT IS AN UNPUBLISHED WORK. COPYRIGHT 2015

GLADIATOR TECHNOLOGIES ALL RIGHTS RESERVED.

THIS DOCUMENT AND ALL INFORMATION AND EXPRESSION CONTAINED HEREIN ARE THE PROPERTY OF GLADIATOR TECHNOLOGIES AND ARE PROVIDED TO THE RECIPIENT IN CONFIDENCE ON A "NEED TO KNOW" BASIS. YOUR USE OF THIS DOCUMENT CONSTITUTES ACCEPTANCE OF THESE TERMS.

INFORMATION CONTAINED IN THIS DOCUMENT IS SUBJECT TO U.S. EXPORT LAWS AS DEFINED IN THE EXPORT ADMINISTRATION REGULATIONS (EAR) AND/OR THE INTERNATIONAL TRAFFIC AND ARMS REGULATIONS (ITAR). ILLEGAL EXPORT IS PROHIBITED.

Commercial Distribution Authorized per Commodity Classification ECCN7A994 (T-5 Countries Distribution Prohibited) Non-Technical Detail and is Non-ITAR

TYPED SIGNATURES CONSTITUTE APPROVAL. ACTUAL SIGNATURES ON FILE AT GLADIATOR TECHNOLOGIES IN SNOQUALMIE, WA



UNLESS OTHERWISE SPECIFIED			CONTRACT NO.			GLADIATOR TECHNOLOGIES SNOQUALMIE, WA		
ALL DIMENSIONS ARE IN INCHES AND [] METRIC - TOLERANCES UNLESS SPECIFIED ARE:	TOL.	.XX ±.01	DRAWN	NJC	10/11/12	TITLE: G150Z OUTLINE		
		.XXX ±.005	CHECKED	MEA	10/11/12			
FINISH:	INTERPRET DRAWING PER ASME Y14.100 BREAK ALL SHARP EDGES	ANGLE ±X°	MFG. ENG.	NJC	10/11/12	SIZE: B	DWG. NO. 990-G150Z	REV. C
			Q.A.	BCB	10/11/12	SCALE: 3:2		
DASH NO.	NEXT ASSY DWG	APPLICATION	PRECIOUS METAL INDICATOR CODE A			CAGE CODE: 47L11	SHEET: 1 OF 1	